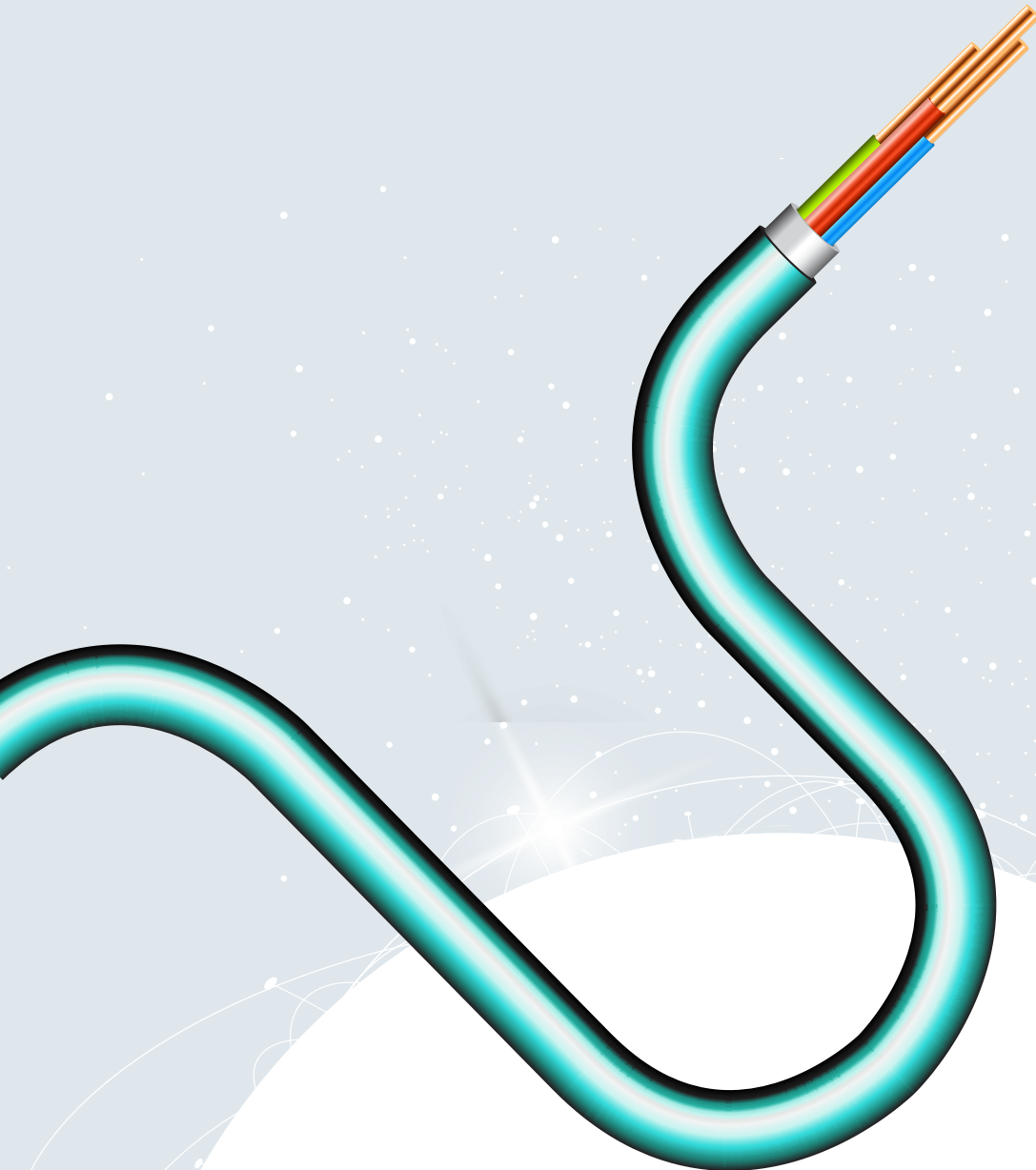


# Fiber Patch Cable Guide

Comprehensive Fiber Network Patch Cable Solutions



# Fiber Patch Cable Solutions

## Fiber Patch Cables

**OM4 Multimode**

**OM3 Multimode**

**OM2 Multimode**

**OM1 Multimode**

**Singlemode**

## MPO / MTP Fiber Patch Cables

**Multimode MTP**

**Multimode MPO**

**Singlemode MTP**

**Singlemode MPO**



# Multimode OM4 Duplex

## MM OM4 50/125 DUPLEX FIBER CABLES

### Performance:

Insertion Loss (max.): 0.3dB  
 Storage Temperature: -40°C +80°C  
 Operation Temperature: -20°C +70°C  
 Mating Durability: <0.2dB  
 Attenuation dB/km max.: 1.0

### Fiber:

Core Diameter: 50µm  
 Cladding Diameter: 125µm  
 Inner Strength Material: Kevlar

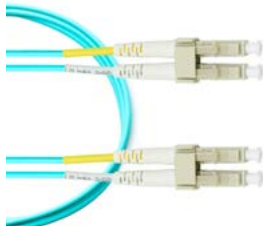
### Jacket:

Jacket Size: 2mm  
 Jacket Style: Duplex Zipcord PVC  
 Jacket Color: Aqua  
 Fire Rating: OFNR (Riser)

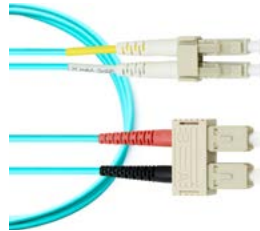
### Practical Distance Applications

100Mb	1Gbe	10Gbe	40Gbe	100Gbe	400Gbe	800Gbe
2000m	1100m	400m	150m	150m	100m	100m

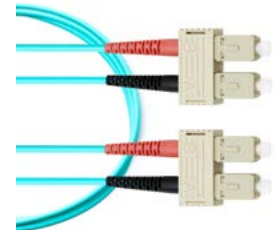
**Standard Stock Lengths:** 1M – 10M, 15M, 20M, 25M, 30M



**GT-LCLCDM4A-xM**  
LC to LC MM OM4



**GT-LCSCDM4A-xM**  
LC to SC MM OM4

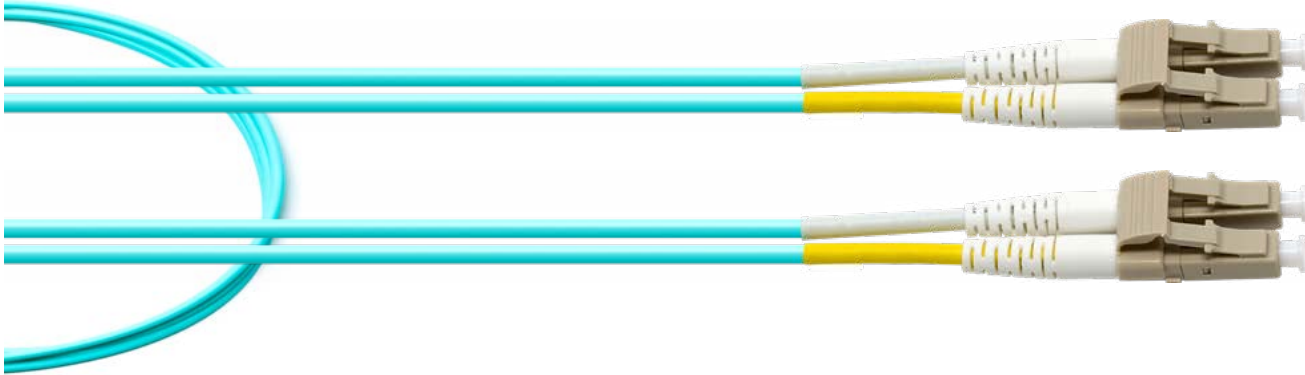


**GT-SCSCDM4A-xM**  
SC to SC MM OM4

**OM4**  
**OM3**  
**OM2**  
**MULTIMODE**  
**OM1**  
**MM MPO**  
**MM MTP**  
**SINGLEMODE**  
**OS2 MPO**  
**OS2 MTP**  
**OS2**

# GT-LCLCDM4A-xM

LC/LC Duplex Multimode OM4 50/125 Cable Aqua- xM



The GigaTech Products **GT-LCLCDM4A-xM** fiber optic patch cords are ideal for short distance patching applications. These fiber optic cables have been built to exceed industry standards and are tested for insertion loss and reflectance on all connectors. They are constructed using Corning glass within UL certified OFNR (Riser) rated jacket with Kevlar yarn, and are factory terminated resulting in uncompromised performance.

### Performance:

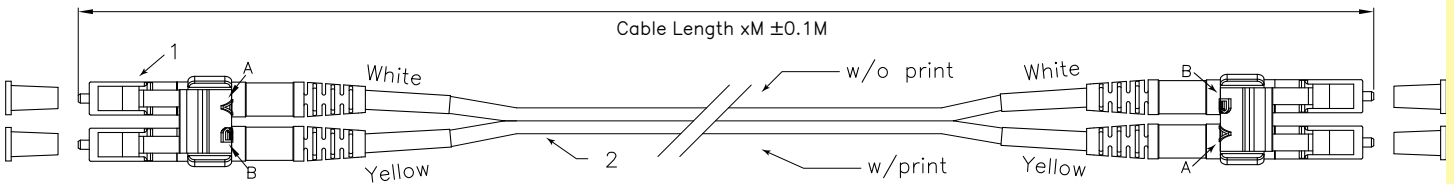
Insertion Loss (max.): 0.3dB  
 Storage Temperature: -40°C +80°C  
 Operation Temperature: -20°C +70°C  
 Mating Durability: <0.2dB  
 Attenuation dB/km max.: 1.0

### Fiber:

Core Diameter: 50µm  
 Cladding Diameter: 125µm  
 Inner Strength Material: Kevlar  
 Connector Type (1): LC  
 Connector Style(1): Duplex  
 Connector Type (2): LC  
 Connector Style (2): Duplex

### Jacket:

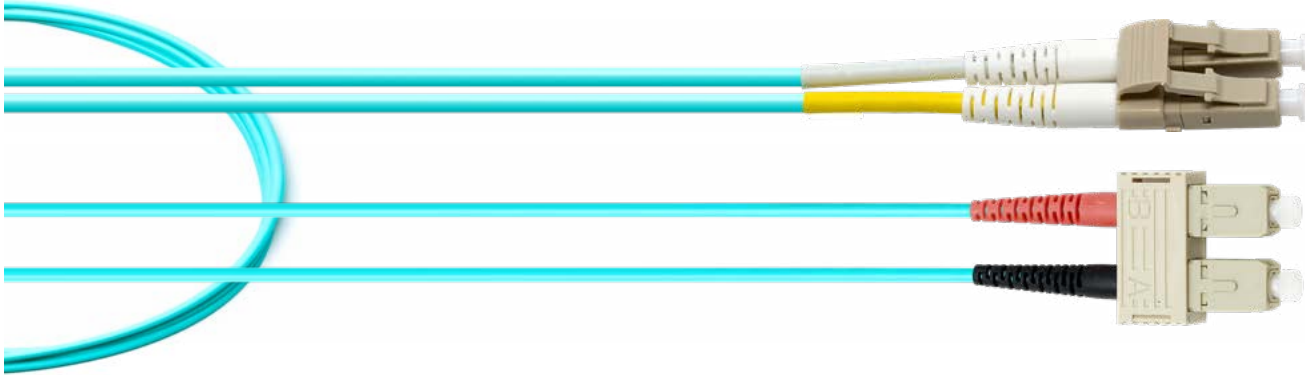
Jacket Size: 2mm  
 Jacket Style: Duplex Zipcord PVC  
 Jacket Color: Aqua  
 Fire Rating: OFNR (Riser)



1	Mode	Ferrule	Housing	Clip	Boot	Tube	Cap
	MM	Zirconia(Ø1.25mm)	Ivory(PC)	Ivory(PP)	White(TPE)	White/Yellow(PVC)	White(PE)
2	Category	Jacket O.D.	Jacket Material		Color		
	OM4(50/125µm)	Ø2mm	PVC OFNR		Aqua		

# GT-LCSCDM4A-xM

LC/SC Duplex Multimode OM4 50/125 Cable Aqua- xM



The GigaTech Products **GT-LCSCDM4A-xM** fiber optic patch cords are ideal for short distance patching applications. These fiber optic cables have been built to exceed industry standards and are tested for insertion loss and reflectance on all connectors. They are constructed using Corning glass within UL certified OFNR (Riser) rated jacket with Kevlar yarn, and are factory terminated resulting in uncompromised performance.

### Performance:

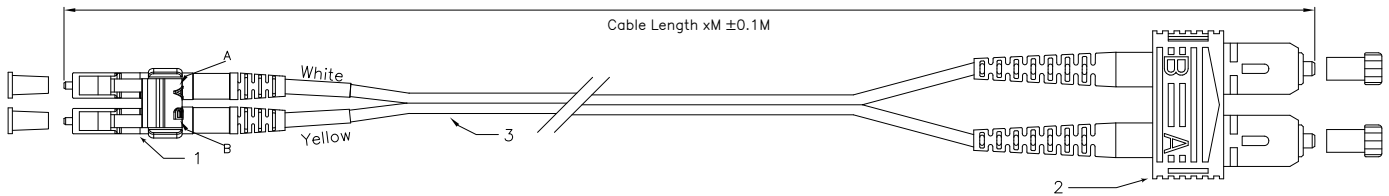
Insertion Loss (max.): 0.3dB  
 Storage Temperature: -40°C +80°C  
 Operation Temperature: -20°C +70°C  
 Mating Durability: <0.2dB  
 Attenuation dB/km max.: 1.0

### Fiber:

Core Diameter: 50µm  
 Cladding Diameter: 125µm  
 Inner Strength Material: Kevlar  
 Connector Type (1): LC  
 Connector Style(1): Duplex  
 Connector Type (2): SC  
 Connector Style (2): Duplex

### Jacket:

Jacket Size: 2mm  
 Jacket Style: Duplex Zipcord PVC  
 Jacket Color: Aqua  
 Fire Rating: OFNR (Riser)



1	Mode	Ferrule	Housing	Clip	Boot	Tube	Cap
	MM	Zirconia(Ø1.25mm)	Ivory(PC)	Ivory(PP)	White(TPE)	White/Yellow(PVC)	White(PE)
2	Mode	Ferrule	Housing	Clip	Boot	Tube	Cap
	MM	Zirconia(Ø2.5mm)	Ivory(PBT)	Ivory(ABS)	Red/Black	White/Yellow(PVC)	Clear(PE)
3	Category	Jacket O.D.	Jacket Material	Color			
	OM4(50/125um)	Ø2mm	PVC OFNR	Aqua			

## GT-SCSCDM4A-xM

SC/SC Duplex Multimode OM4 50/125 Cable Aqua- xM



The GigaTech Products **GT-SCSCDM4A-xM** fiber optic patch cords are ideal for short distance patching applications. These fiber optic cables have been built to exceed industry standards and are tested for insertion loss and reflectance on all connectors. They are constructed using Corning glass within UL certified OFNR (Riser) rated jacket with Kevlar yarn, and are factory terminated resulting in uncompromised performance.

### Performance:

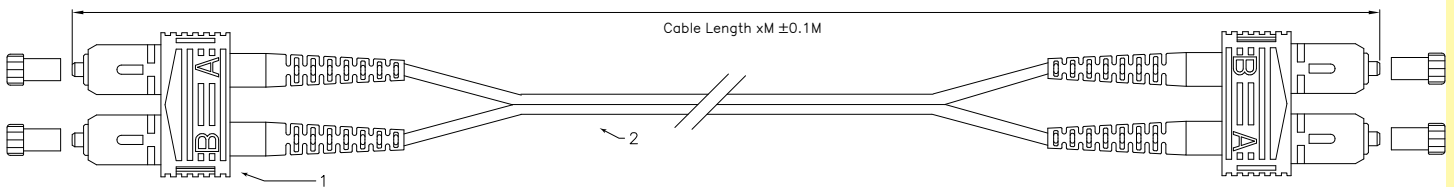
Insertion Loss (max.): 0.3dB  
 Storage Temperature: -40°C +80°C  
 Operation Temperature: -20°C +70°C  
 Mating Durability: <0.2dB  
 Attenuation dB/km max.: 1.0

### Fiber:

Core Diameter: 50µm  
 Cladding Diameter: 125µm  
 Inner Strength Material: Kevlar  
 Connector Type (1): SC  
 Connector Style(1): Duplex  
 Connector Type (2): SC  
 Connector Style (2): Duplex

### Jacket:

Jacket Size: 2mm  
 Jacket Style: Duplex Zipcord PVC  
 Jacket Color: Aqua  
 Fire Rating: OFNR (Riser)



1	Mode	Ferrule	Housing	Clip	Boot	Tube	Cap
	MM	Zirconia(Ø2.5mm)	Ivory(PBT)	Ivory(ABS)	Red/Black	White/Yellow(PVC)	Clear(PE)

2	Category	Jacket O.D.	Jacket Material	Color
	OM4(50/125µm)	Ø2mm	PVC OFNR	Aqua

# Multimode OM3 Duplex

## MM OM3 50/125 DUPLEX FIBER CABLES

**Performance:**

Insertion Loss (max.): 0.3dB  
 Storage Temperature: -40°C +80°C  
 Operation Temperature: -20°C +70°C  
 Mating Durability: <0.2dB  
 Attenuation dB/km max.: 1.0

**Fiber:**

Core Diameter: 50µm  
 Cladding Diameter: 125µm  
 Inner Strength Material: Kevlar

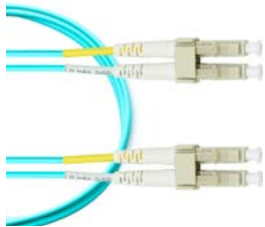
**Jacket:**

Jacket Size: 2mm  
 Jacket Style: Duplex Zipcord PVC  
 Jacket Color: Aqua  
 Fire Rating: OFNR (Riser)

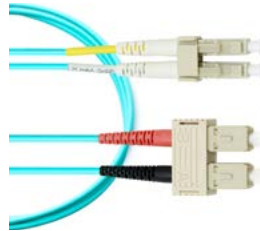
### Practical Distance Applications

100Mb	1Gbe	10Gbe	40Gbe	100Gbe	400Gbe	800Gbe
2000m	1100m	400m	150m	150m	70m	60m

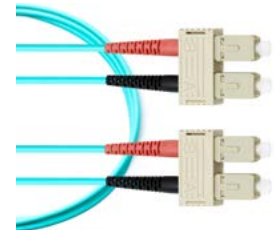
**Standard Stock Lengths:** 1M – 10M, 15M, 20M, 25M, 30M



**GT-LCLCDM3A-xM**  
LC to LC MM OM3



**GT-LCSCDM3A-xM**  
LC to SC MM OM3

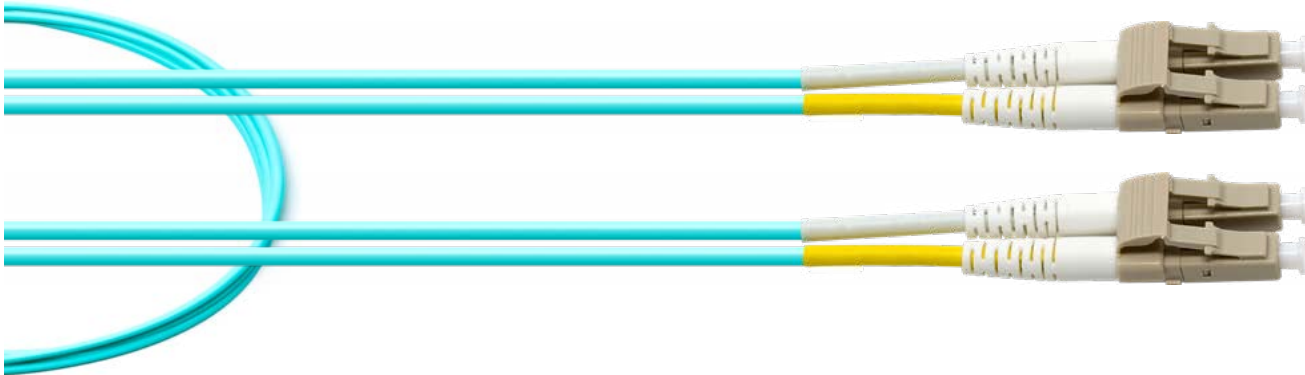


**GT-SCSCDM3A-xM**  
SC to SC MM OM3



# GT-LCLCDM3A-xM

LC/LC Duplex Multimode OM3 50/125 Cable Aqua- xM



The GigaTech Products **GT-LCLCDM3A-xM** fiber optic patch cords are ideal for short distance patching applications. These fiber optic cables have been built to exceed industry standards and are tested for insertion loss and reflectance on all connectors. They are constructed using Corning glass within UL certified OFNR (Riser) rated jacket with Kevlar yarn, and are factory terminated resulting in uncompromised performance.

### Performance:

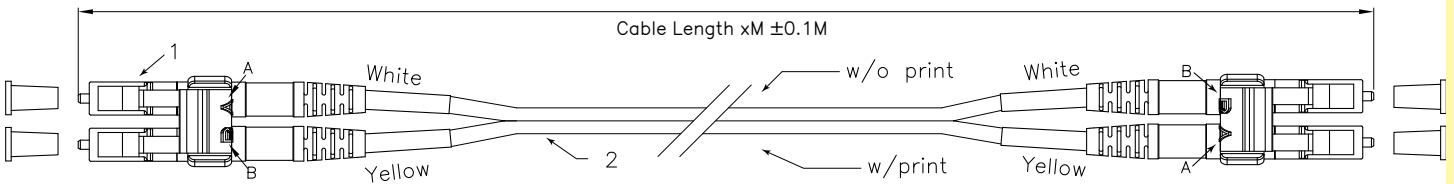
Insertion Loss (max.): 0.3dB  
 Storage Temperature: -40°C +80°C  
 Operation Temperature: -20°C +70°C  
 Mating Durability: <0.2dB  
 Attenuation dB/km max.: 1.0

### Fiber:

Core Diameter: 50µm  
 Cladding Diameter: 125µm  
 Inner Strength Material: Kevlar  
 Connector Type (1): LC  
 Connector Style(1): Duplex  
 Connector Type (2): LC  
 Connector Style (2): Duplex

### Jacket:

Jacket Size: 2mm  
 Jacket Style: Duplex Zipcord PVC  
 Jacket Color: Aqua  
 Fire Rating: OFNR (Riser)

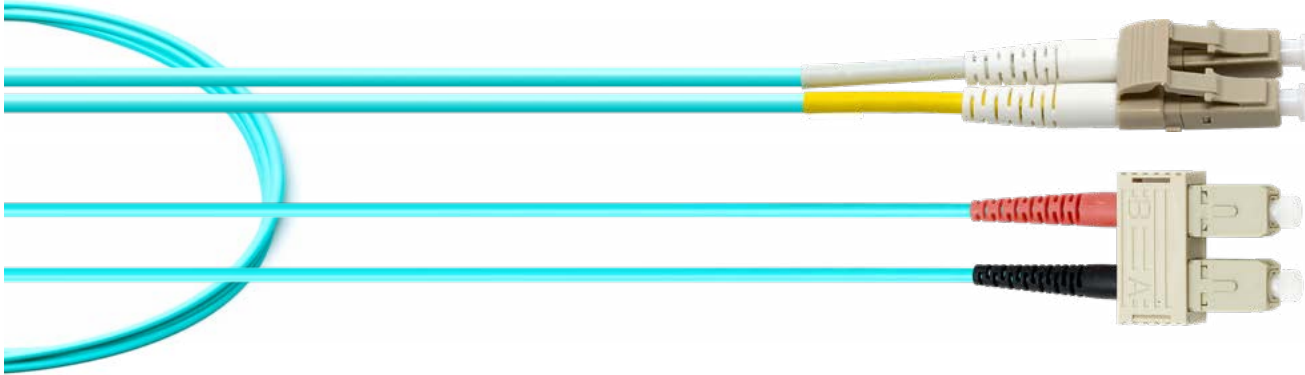


1	Mode	Ferrule	Housing	Clip	Boot	Tube	Cap
	MM	Zirconia(Ø1.25mm)	Ivory(PC)	Ivory(PP)	White(TPE)	White/Yellow(PVC)	White(PE)
2	Category	Jacket O.D.	Jacket Material	Color			
	OM3(50/125µm)	Ø2mm	PVC OFNR	Aqua			



# GT-LCSCDM3A-xM

LC/SC Duplex Multimode OM3 50/125 Cable Aqua- xM



The GigaTech Products **GT-LCSCDM3A-xM** fiber optic patch cords are ideal for short distance patching applications. These fiber optic cables have been built to exceed industry standards and are tested for insertion loss and reflectance on all connectors. They are constructed using Corning glass within UL certified OFNR (Riser) rated jacket with Kevlar yarn, and are factory terminated resulting in uncompromised performance.

### Performance:

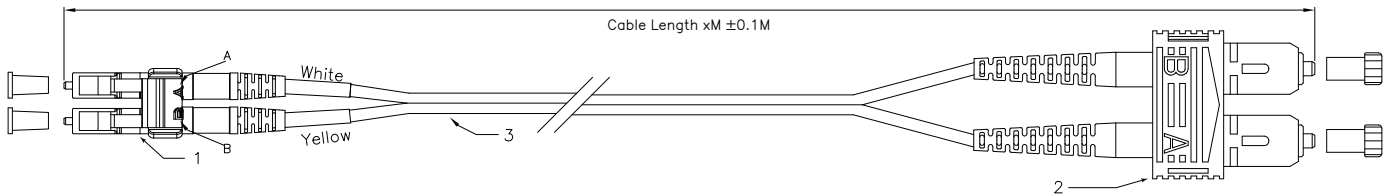
- Insertion Loss (max.): 0.3dB
- Storage Temperature: -40°C +80°C
- Operation Temperature: -20°C +70°C
- Mating Durability: <0.2dB
- Attenuation dB/km max.: 1.0

### Fiber:

- Core Diameter: 50µm
- Cladding Diameter: 125µm
- Inner Strength Material: Kevlar
- Connector Type (1): LC
- Connector Style(1): Duplex
- Connector Type (2): SC
- Connector Style (2): Duplex

### Jacket:

- Jacket Size: 2mm
- Jacket Style: Duplex Zipcord PVC
- Jacket Color: Aqua
- Fire Rating: OFNR (Riser)



1	Mode	Ferrule	Housing	Clip	Boot	Tube	Cap
	MM	Zirconia(Ø1.25mm)	Ivory(PC)	Ivory(PP)	White(TPE)	White/Yellow(PVC)	White(PE)
2	Mode	Ferrule	Housing	Clip	Boot	Tube	Cap
	MM	Zirconia(Ø2.5mm)	Ivory(PBT)	Ivory(ABS)	Red/Black	White/Yellow(PVC)	Clear(PE)
3	Category	Jacket O.D.	Jacket Material	Color			
	OM3(50/125um)	Ø2mm	PVC OFNR	Aqua			

# GT-SCSCDM3A-xM

SC/SC Duplex Multimode OM4 50/125 Cable Aqua- xM



The GigaTech Products **GT-SCSCDM3A-xM** fiber optic patch cords are ideal for short distance patching applications. These fiber optic cables have been built to exceed industry standards and are tested for insertion loss and reflectance on all connectors. They are constructed using Corning glass within UL certified OFNR (Riser) rated jacket with Kevlar yarn, and are factory terminated resulting in uncompromised performance.

### Performance:

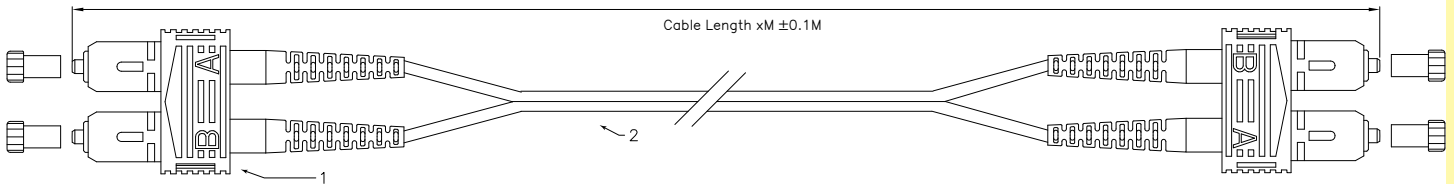
Insertion Loss (max.): 0.3dB  
 Storage Temperature: -40°C +80°C  
 Operation Temperature: -20°C +70°C  
 Mating Durability: <0.2dB  
 Attenuation dB/km max.: 1.0

### Fiber:

Core Diameter: 50µm  
 Cladding Diameter: 125µm  
 Inner Strength Material: Kevlar  
 Connector Type (1): SC  
 Connector Style(1): Duplex  
 Connector Type (2): SC  
 Connector Style (2): Duplex

### Jacket:

Jacket Size: 2mm  
 Jacket Style: Duplex Zipcord PVC  
 Jacket Color: Aqua  
 Fire Rating: OFNR (Riser)



1	Mode	Ferrule	Housing	Clip	Boot	Tube	Cap
	MM	Zirconia(Ø2.5mm)	Ivory(PBT)	Ivory(ABS)	Red/Black	White/Yellow(PVC)	Clear(PE)

2	Category	Jacket O.D.	Jacket Material	Color
	OM3(50/125µm)	Ø2mm	PVC OFNR	Aqua

# Multimode OM2 Duplex

## MM OM2 50/125 DUPLEX FIBER CABLES

**Performance:**

Insertion Loss (max.): 0.3dB  
 Storage Temperature: -40°C +80°C  
 Operation Temperature: -20°C +70°C  
 Mating Durability: <0.2dB  
 Attenuation dB/km max.: 1.0

**Fiber:**

Core Diameter: 50µm  
 Cladding Diameter: 125µm  
 Inner Strength Material: Kevlar

**Jacket:**

Jacket Size: 2mm  
 Jacket Style: Duplex Zipcord PVC  
 Jacket Color: Orange  
 Fire Rating: OFNR (Riser)

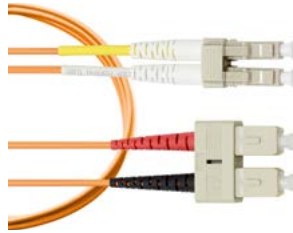
### Practical Distance Applications

Fast Ethernet	1Gbe	10Gbe	40Gbe	100Gbe
2000m	1100m	400m	150m	150m

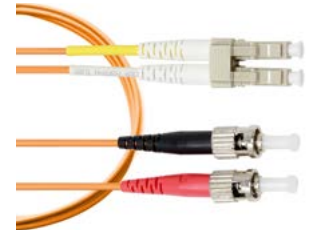
**Standard Stock Lengths:** 1M – 10M, 15M, 20M, 25M, 30M



**GT-LCLCDM20-xM**  
LC to LC MM OM2



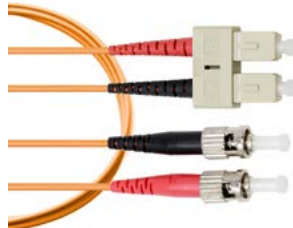
**GT-LCSCDM20-xM**  
LC to SC MM OM2



**GT-LCSTDM20-xM**  
LC to ST MM OM2



**GT-SCSCDM20-xM**  
SC to SC MM OM2



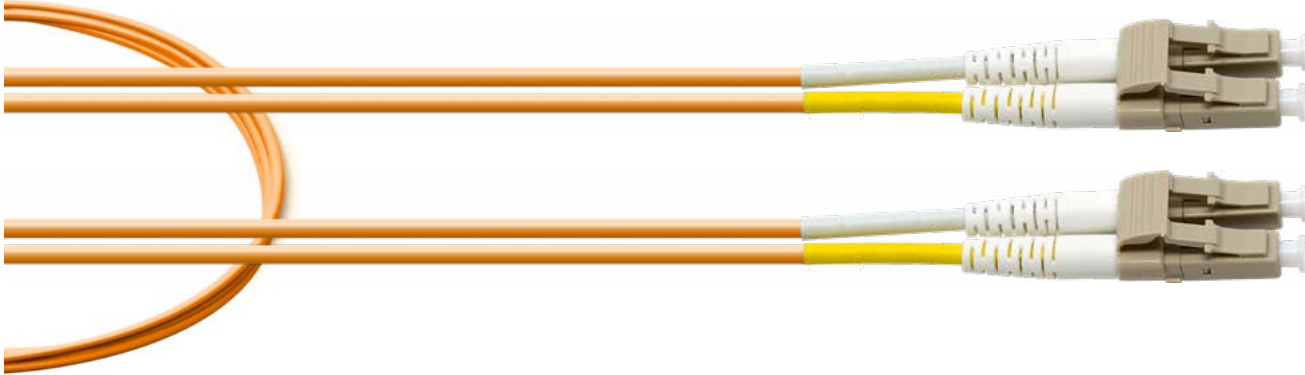
**GT-SCSTDM20-xM**  
SC to ST MM OM2



**GT-STSTDM20-xM**  
ST to ST MM OM2

# GT-LCLCDM20-xM

LC/LC Duplex Multimode OM2 50/125 Cable Orange- xM



The GigaTech Products **GT-LCLCDM20-xM** fiber optic patch cords are ideal for short distance patching applications. These fiber optic cables have been built to exceed industry standards and are tested for insertion loss and reflectance on all connectors. They are constructed using Corning glass within UL certified OFNR (Riser) rated jacket with Kevlar yarn, and are factory terminated resulting in uncompromised performance.

### Performance:

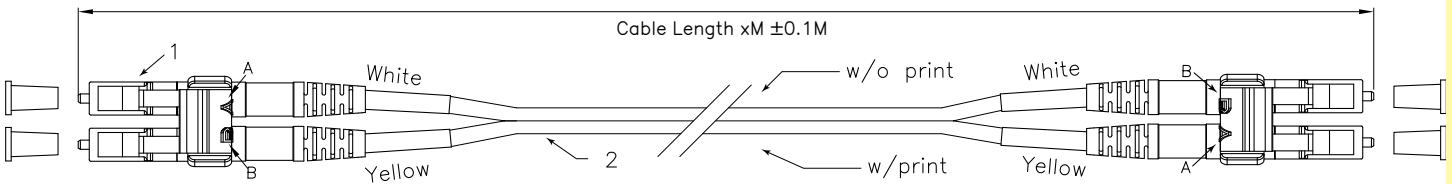
Insertion Loss (max.): 0.3dB  
 Storage Temperature: -40°C +80°C  
 Operation Temperature: -20°C +70°C  
 Mating Durability: <0.2dB  
 Attenuation dB/km max.: 1.0

### Fiber:

Core Diameter: 50µm  
 Cladding Diameter: 125µm  
 Inner Strength Material: Kevlar  
 Connector Type (1): LC  
 Connector Style(1): Duplex  
 Connector Type (2): LC  
 Connector Style (2): Duplex

### Jacket:

Jacket Size: 2mm  
 Jacket Style: Duplex Zipcord PVC  
 Jacket Color: Orange  
 Fire Rating: OFNR (Riser)



1	Mode	Ferrule	Housing	Clip	Boot	Tube	Cap
	MM	Zirconia(Ø1.25mm)	Ivory(PC)	Ivory(PP)	White(TPE)	White/Yellow(PVC)	White(PE)
2	Category	Jacket O.D.	Jacket Material	Color			
	OM2(50/125µm)	Ø2mm	PVC OFNR	Orange			

# GT-LCSCDM20-xM

LC/SC Duplex Multimode OM2 50/125 Cable Orange- xM



The GigaTech Products **GT-LCSCDM20-xM** fiber optic patch cords are ideal for short distance patching applications. These fiber optic cables have been built to exceed industry standards and are tested for insertion loss and reflectance on all connectors. They are constructed using Corning glass within UL certified OFNR (Riser) rated jacket with Kevlar yarn, and are factory terminated resulting in uncompromised performance.

### Performance:

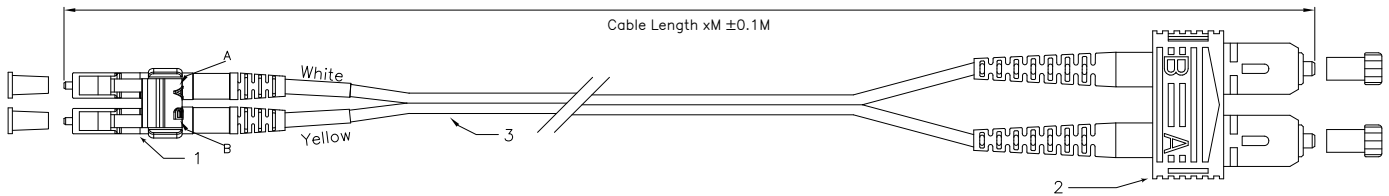
Insertion Loss (max.): 0.3dB  
 Storage Temperature: -40°C +80°C  
 Operation Temperature: -20°C +70°C  
 Mating Durability: <0.2dB  
 Attenuation dB/km max.: 1.0

### Fiber:

Core Diameter: 50µm  
 Cladding Diameter: 125µm  
 Inner Strength Material: Kevlar  
 Connector Type (1): LC  
 Connector Style(1): Duplex  
 Connector Type (2): SC  
 Connector Style (2): Duplex

### Jacket:

Jacket Size: 2mm  
 Jacket Style: Duplex Zipcord PVC  
 Jacket Color: Orange  
 Fire Rating: OFNR (Riser)



1	Mode	Ferrule	Housing	Clip	Boot	Tube	Cap
	MM	Zirconia(Ø1.25mm)	Ivory(PC)	Ivory(PP)	White(TPE)	White/Yellow(PVC)	White(PE)
2	Mode	Ferrule	Housing	Clip	Boot	Tube	Cap
	MM	Zirconia(Ø2.5mm)	Ivory(PBT)	Ivory(ABS)	Red/Black	White/Yellow(PVC)	Clear(PE)
3	Category	Jacket O.D.	Jacket Material	Color			
	OM2(50/125um)	Ø2mm	PVC OFNR	Orange			

# GT-LCSTDM20-xM

LC/ST Duplex Multimode OM2 50/125 Cable Orange- xM



The GigaTech Products **GT-LCSTDM20-xM** fiber optic patch cords are ideal for short distance patching applications. These fiber optic cables have been built to exceed industry standards and are tested for insertion loss and reflectance on all connectors. They are constructed using Corning glass within UL certified OFNR (Riser) rated jacket with Kevlar yarn, and are factory terminated resulting in uncompromised performance.

### Performance:

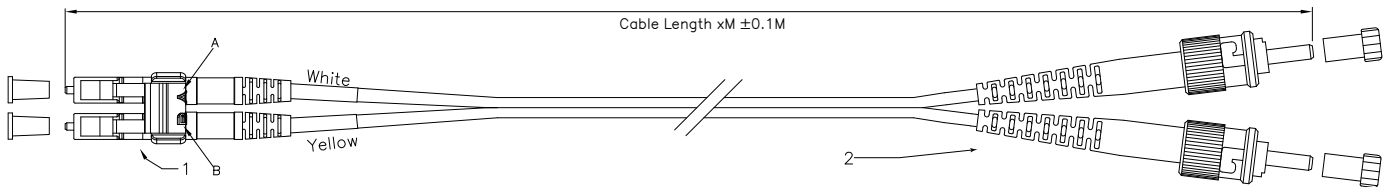
Insertion Loss (max.): 0.3dB  
 Storage Temperature: -40°C +80°C  
 Operation Temperature: -20°C +70°C  
 Mating Durability: <0.2dB  
 Attenuation dB/km max.: 1.0

### Fiber:

Core Diameter: 50µm  
 Cladding Diameter: 125µm  
 Inner Strength Material: Kevlar  
 Connector Type (1): LC  
 Connector Style(1): Duplex  
 Connector Type (2): ST  
 Connector Style (2): Duplex

### Jacket:

Jacket Size: 2mm  
 Jacket Style: Duplex Zipcord PVC  
 Jacket Color: Orange  
 Fire Rating: OFNR (Riser)



1	Mode	Ferrule	Housing	Clip	Boot	Tube	Cap
	MM	Zirconia(Ø1.25mm)	Ivory(PC)	Ivory(PP)	White(TPE)	White/Yellow(PVC)	White(PE)
2	Mode	Ferrule	Housing	Boot	Cap		
	MM	Zirconia(Ø2.5mm)	Metal	Red/Black	Clear(PE)		
3	Category	Jacket O.D.	Jacket Material	Color			
	OM2(50/125um)	Ø2mm	PVC OFNR	Orange			

# GT-SCSCDM20-xM

SC/SC Duplex Multimode OM2 50/125 Cable Orange- xM



The GigaTech Products **GT-SCSCDM20-xM** fiber optic patch cords are ideal for short distance patching applications. These fiber optic cables have been built to exceed industry standards and are tested for insertion loss and reflectance on all connectors. They are constructed using Corning glass within UL certified OFNR (Riser) rated jacket with Kevlar yarn, and are factory terminated resulting in uncompromised performance.

### Performance:

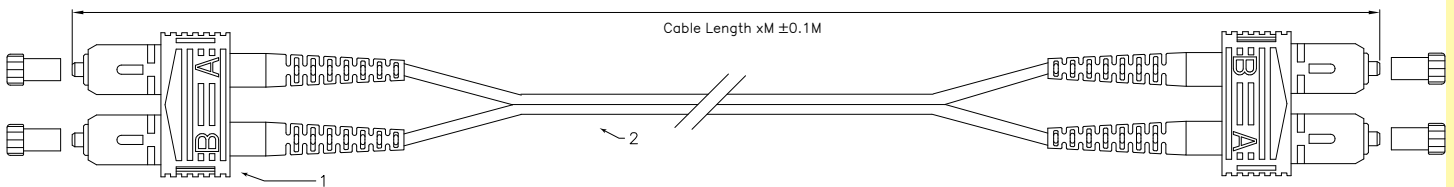
Insertion Loss (max.): 0.3dB  
 Storage Temperature: -40°C +80°C  
 Operation Temperature: -20°C +70°C  
 Mating Durability: <0.2dB  
 Attenuation dB/km max.: 1.0

### Fiber:

Core Diameter: 50µm  
 Cladding Diameter: 125µm  
 Inner Strength Material: Kevlar  
 Connector Type (1): SC  
 Connector Style(1): Duplex  
 Connector Type (2): SC  
 Connector Style (2): Duplex

### Jacket:

Jacket Size: 2mm  
 Jacket Style: Duplex Zipcord PVC  
 Jacket Color: Orange  
 Fire Rating: OFNR (Riser)



1	Mode	Ferrule	Housing	Clip	Boot	Tube	Cap
	MM	Zirconia(Ø2.5mm)	Ivory(PBT)	Ivory(ABS)	Red/Black	White/Yellow(PVC)	Clear(PE)
2	Category		Jacket O.D.	Jacket Material		Color	
	OM2(50/125µm)		Ø2mm	PVC OFNR		Orange	



# GT-SCSTDM20-xM

SC/ST Duplex Multimode OM2 50/125 Cable Orange- xM



The GigaTech Products **GT-SCSTDM20-xM** fiber optic patch cords are ideal for short distance patching applications. These fiber optic cables have been built to exceed industry standards and are tested for insertion loss and reflectance on all connectors. They are constructed using Corning glass within UL certified OFNR (Riser) rated jacket with Kevlar yarn, and are factory terminated resulting in uncompromised performance.

### Performance:

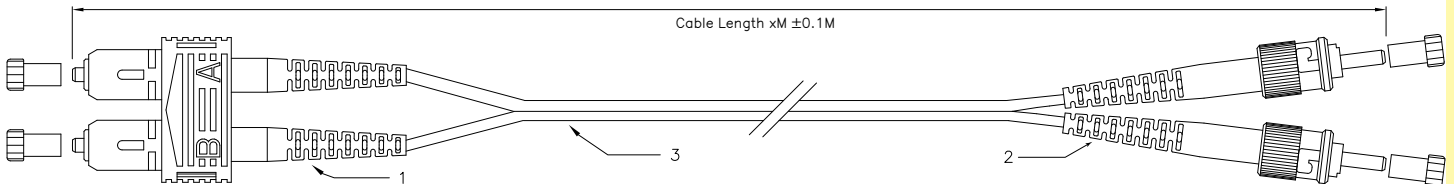
Insertion Loss (max.): 0.3dB  
 Storage Temperature: -40°C +80°C  
 Operation Temperature: -20°C +70°C  
 Mating Durability: <0.2dB  
 Attenuation dB/km max.: 1.0

### Fiber:

Core Diameter: 50µm  
 Cladding Diameter: 125µm  
 Inner Strength Material: Kevlar  
 Connector Type (1): SC  
 Connector Style(1): Duplex  
 Connector Type (2): ST  
 Connector Style (2): Duplex

### Jacket:

Jacket Size: 2mm  
 Jacket Style: Duplex Zipcord PVC  
 Jacket Color: Orange  
 Fire Rating: OFNR (Riser)



1	Mode	Ferrule	Housing	Clip	Boot	Tube	Cap
	MM	Zirconia(Ø2.5mm)	Ivory(PBT)	Ivory(ABS)	Red/Black	White/Yellow(PVC)	Clear(PE)
2	Mode	Ferrule	Housing	Boot	Cap		
	MM	Zirconia(Ø2.5mm)	Metal	Red/Black	Clear(PE)		
3	Category		Jacket O.D.	Jacket Material		Color	
	OM2(50/125um)		Ø2mm	PVC OFNR		Orange	

# GT-STSTDM20-xM

ST/ST Duplex Multimode OM2 50/125 Cable Orange- xM



The GigaTech Products **GT-STSTDM20-xM** fiber optic patch cords are ideal for short distance patching applications. These fiber optic cables have been built to exceed industry standards and are tested for insertion loss and reflectance on all connectors. They are constructed using Corning glass within UL certified OFNR (Riser) rated jacket with Kevlar yarn, and are factory terminated resulting in uncompromised performance.

### Performance:

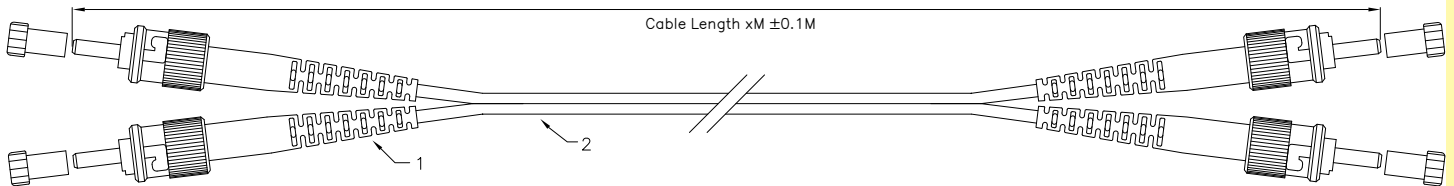
Insertion Loss (max.): 0.3dB  
 Storage Temperature: -40°C +80°C  
 Operation Temperature: -20°C +70°C  
 Mating Durability: <0.2dB  
 Attenuation dB/km max.: 1.0

### Fiber:

Core Diameter: 50µm  
 Cladding Diameter: 125µm  
 Inner Strength Material: Kevlar  
 Connector Type (1): ST  
 Connector Style(1): Duplex  
 Connector Type (2): ST  
 Connector Style (2): Duplex

### Jacket:

Jacket Size: 2mm  
 Jacket Style: Duplex Zipcord PVC  
 Jacket Color: Orange  
 Fire Rating: OFNR (Riser)



1	Mode	Ferrule	Housing	Boot	Cap
	MM	Zirconia(Ø2.5mm)	Metal	Red/Black	Clear(PE)

2	Category	Jacket O.D.	Jacket Material	Color
	OM2(50/125um)	Ø2mm	PVC OFNR	Orange

# Multimode OM1 Duplex

## MM OM1 51/125 DUPLEX FIBER CABLES

**Performance:**

Insertion Loss (max.): 0.3dB  
 Storage Temperature: -40°C +80°C  
 Operation Temperature: -20°C +70°C  
 Mating Durability: <0.2dB  
 Attenuation dB/km max.: 1.0

**Fiber:**

Core Diameter: 50µm  
 Cladding Diameter: 125µm  
 Inner Strength Material: Kevlar

**Jacket:**

Jacket Size: 2mm  
 Jacket Style: Duplex Zipcord PVC  
 Jacket Color: Orange  
 Fire Rating: OFNR (Riser)

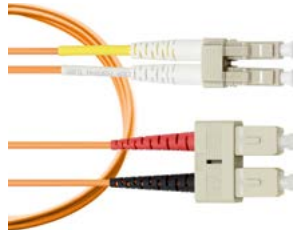
### Practical Distance Applications

Fast Ethernet	1Gbe	10Gbe	40Gbe	100Gbe
2000m	1100m	400m	150m	150m

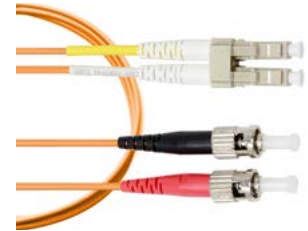
**Standard Stock Lengths:** 1M – 10M, 15M, 20M, 25M, 30M



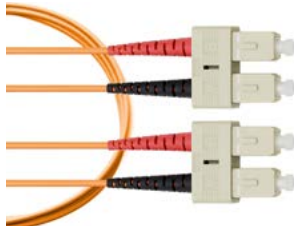
**GT-LCLCDM10-xM**  
LC to LC MM OM1



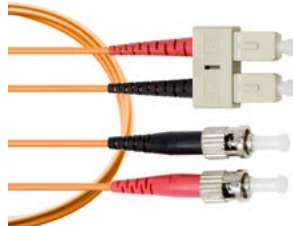
**GT-LCSCDM10-xM**  
LC to SC MM OM1



**GT-LCSTDM10-xM**  
LC to ST MM OM1



**GT-SCSCDM10-xM**  
SC to SC MM OM1



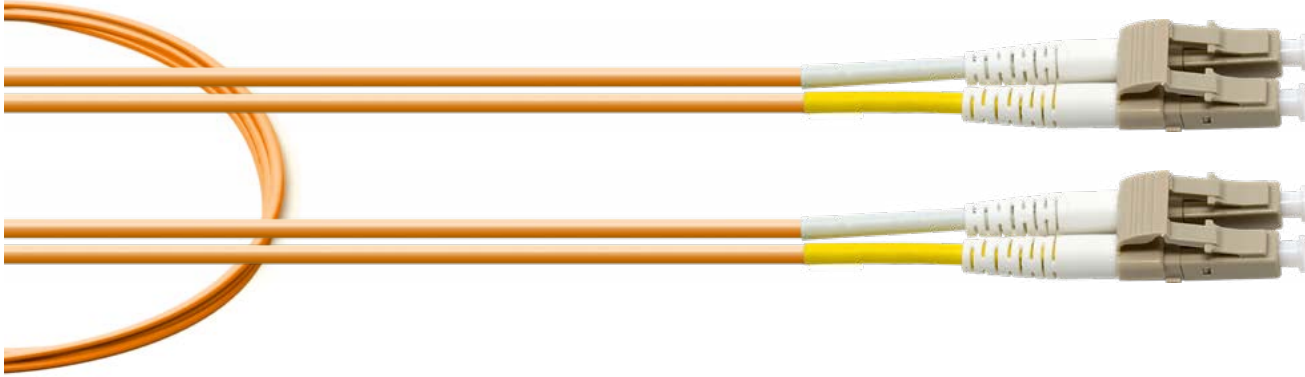
**GT-SCSTDM10-xM**  
SC to ST MM OM1



**GT-STSTDM10-xM**  
ST to ST MM OM1

## GT-LCLCDM10-xM

LC/LC Duplex Multimode OM2 50/125 Cable Orange- xM



The GigaTech Products **GT-LCLCDM10-xM** fiber optic patch cords are ideal for short distance patching applications. These fiber optic cables have been built to exceed industry standards and are tested for insertion loss and reflectance on all connectors. They are constructed using Corning glass within UL certified OFNR (Riser) rated jacket with Kevlar yarn, and are factory terminated resulting in uncompromised performance.

### Performance:

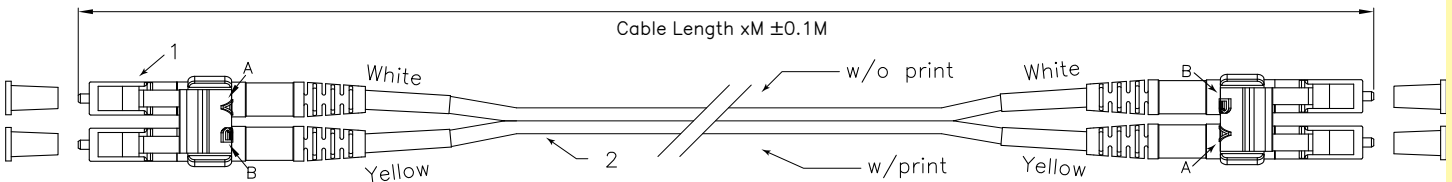
Insertion Loss (max.): 0.3dB  
 Storage Temperature: -40°C +80°C  
 Operation Temperature: -20°C +70°C  
 Mating Durability: <0.2dB  
 Attenuation dB/km max.: 1.0

### Fiber:

Core Diameter: 50µm  
 Cladding Diameter: 125µm  
 Inner Strength Material: Kevlar  
 Connector Type (1): LC  
 Connector Style(1): Duplex  
 Connector Type (2): LC  
 Connector Style (2): Duplex

### Jacket:

Jacket Size: 2mm  
 Jacket Style: Duplex Zipcord PVC  
 Jacket Color: Orange  
 Fire Rating: OFNR (Riser)



1	Mode	Ferrule	Housing	Clip	Boot	Tube	Cap
	MM	Zirconia(Ø1.25mm)	Ivory(PC)	Ivory(PP)	White(TPE)	White/Yellow(PVC)	White(PE)

2	Category	Jacket O.D.	Jacket Material	Color
	OM1(50/125µm)	Ø2mm	PVC OFNR	Orange

# GT-LCSCDM10-xM

LC/SC Duplex Multimode OM2 50/125 Cable Orange- xM



The GigaTech Products **GT-LCSCDM10-xM** fiber optic patch cords are ideal for short distance patching applications. These fiber optic cables have been built to exceed industry standards and are tested for insertion loss and reflectance on all connectors. They are constructed using Corning glass within UL certified OFNR (Riser) rated jacket with Kevlar yarn, and are factory terminated resulting in uncompromised performance.

### Performance:

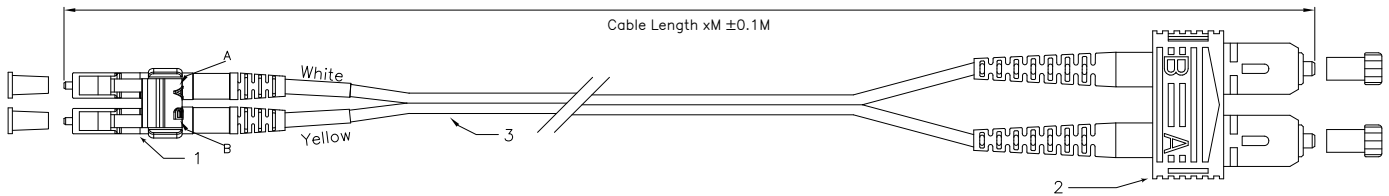
Insertion Loss (max.): 0.3dB  
 Storage Temperature: -40°C +80°C  
 Operation Temperature: -20°C +70°C  
 Mating Durability: <0.2dB  
 Attenuation dB/km max.: 1.0

### Fiber:

Core Diameter: 50µm  
 Cladding Diameter: 125µm  
 Inner Strength Material: Kevlar  
 Connector Type (1): LC  
 Connector Style(1): Duplex  
 Connector Type (2): SC  
 Connector Style (2): Duplex

### Jacket:

Jacket Size: 2mm  
 Jacket Style: Duplex Zipcord PVC  
 Jacket Color: Orange  
 Fire Rating: OFNR (Riser)



1	Mode	Ferrule	Housing	Clip	Boot	Tube	Cap
	MM	Zirconia(Ø1.25mm)	Ivory(PC)	Ivory(PP)	White(TPE)	White/Yellow(PVC)	White(PE)
2	Mode	Ferrule	Housing	Clip	Boot	Tube	Cap
	MM	Zirconia(Ø2.5mm)	Ivory(PBT)	Ivory(ABS)	Red/Black	White/Yellow(PVC)	Clear(PE)
3	Category	Jacket O.D.	Jacket Material	Color			
	OM1(50/125um)	Ø2mm	PVC OFNR	Orange			

# GT-LCSTDM10-xM

LC/ST Duplex Multimode OM2 50/125 Cable Orange- xM



The GigaTech Products **GT-LCSTDM10-xM** fiber optic patch cords are ideal for short distance patching applications. These fiber optic cables have been built to exceed industry standards and are tested for insertion loss and reflectance on all connectors. They are constructed using Corning glass within UL certified OFNR (Riser) rated jacket with Kevlar yarn, and are factory terminated resulting in uncompromised performance.

### Performance:

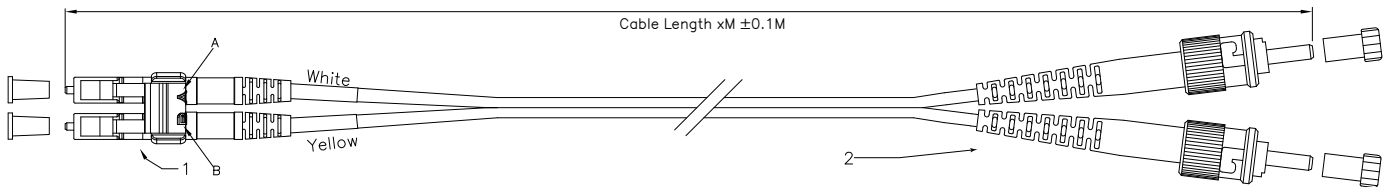
Insertion Loss (max.): 0.3dB  
 Storage Temperature: -40°C +80°C  
 Operation Temperature: -20°C +70°C  
 Mating Durability: <0.2dB  
 Attenuation dB/km max.: 1.0

### Fiber:

Core Diameter: 50µm  
 Cladding Diameter: 125µm  
 Inner Strength Material: Kevlar  
 Connector Type (1): LC  
 Connector Style(1): Duplex  
 Connector Type (2): ST  
 Connector Style (2): Duplex

### Jacket:

Jacket Size: 2mm  
 Jacket Style: Duplex Zipcord PVC  
 Jacket Color: Orange  
 Fire Rating: OFNR (Riser)



1	Mode	Ferrule	Housing	Clip	Boot	Tube	Cap
	MM	Zirconia(Ø1.25mm)	Ivory(PC)	Ivory(PP)	White(TPE)	White/Yellow(PVC)	White(PE)
2	Mode	Ferrule	Housing	Boot	Cap		
	MM	Zirconia(Ø2.5mm)	Metal	Red/Black	Clear(PE)		
3	Category	Jacket O.D.	Jacket Material	Color			
	OM1(50/125um)	Ø2mm	PVC OFNR	Orange			



# GT-SCSCDM10-xM

SC/SC Duplex Multimode OM2 50/125 Cable Orange- xM



The GigaTech Products **GT-SCSCDM10-xM** fiber optic patch cords are ideal for short distance patching applications. These fiber optic cables have been built to exceed industry standards and are tested for insertion loss and reflectance on all connectors. They are constructed using Corning glass within UL certified OFNR (Riser) rated jacket with Kevlar yarn, and are factory terminated resulting in uncompromised performance.

### Performance:

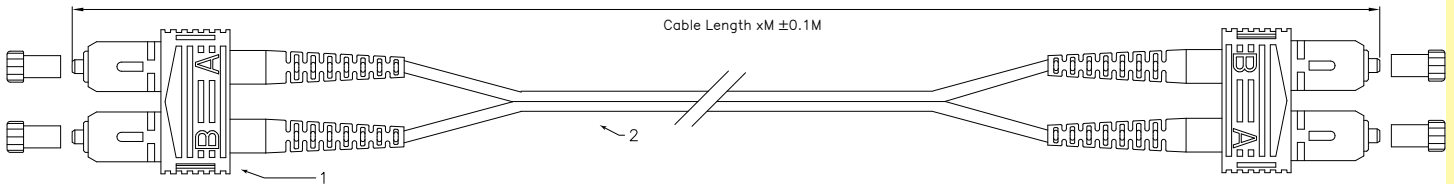
Insertion Loss (max.): 0.3dB  
 Storage Temperature: -40°C +80°C  
 Operation Temperature: -20°C +70°C  
 Mating Durability: <0.2dB  
 Attenuation dB/km max.: 1.0

### Fiber:

Core Diameter: 50µm  
 Cladding Diameter: 125µm  
 Inner Strength Material: Kevlar  
 Connector Type (1): SC  
 Connector Style(1): Duplex  
 Connector Type (2): SC  
 Connector Style (2): Duplex

### Jacket:

Jacket Size: 2mm  
 Jacket Style: Duplex Zipcord PVC  
 Jacket Color: Orange  
 Fire Rating: OFNR (Riser)



1	Mode	Ferrule	Housing	Clip	Boot	Tube	Cap
	MM	Zirconia(Ø2.5mm)	Ivory(PBT)	Ivory(ABS)	Red/Black	White/Yellow(PVC)	Clear(PE)
2	Category		Jacket O.D.	Jacket Material		Color	
	OM1(50/125µm)		Ø2mm	PVC OFNR		Orange	



# GT-SCSTDM10-xM

SC/ST Duplex Multimode OM2 50/125 Cable Orange- xM



The GigaTech Products **GT-SCSTDM10-xM** fiber optic patch cords are ideal for short distance patching applications. These fiber optic cables have been built to exceed industry standards and are tested for insertion loss and reflectance on all connectors. They are constructed using Corning glass within UL certified OFNR (Riser) rated jacket with Kevlar yarn, and are factory terminated resulting in uncompromised performance.

### Performance:

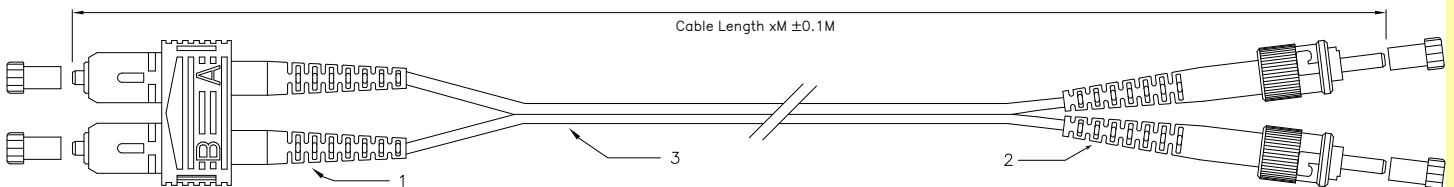
Insertion Loss (max.): 0.3dB  
 Storage Temperature: -40°C +80°C  
 Operation Temperature: -20°C +70°C  
 Mating Durability: <0.2dB  
 Attenuation dB/km max.: 1.0

### Fiber:

Core Diameter: 50µm  
 Cladding Diameter: 125µm  
 Inner Strength Material: Kevlar  
 Connector Type (1): SC  
 Connector Style(1): Duplex  
 Connector Type (2): ST  
 Connector Style (2): Duplex

### Jacket:

Jacket Size: 2mm  
 Jacket Style: Duplex Zipcord PVC  
 Jacket Color: Orange  
 Fire Rating: OFNR (Riser)



1	Mode	Ferrule	Housing	Clip	Boot	Tube	Cap
	MM	Zirconia(Ø2.5mm)	Ivory(PBT)	Ivory(ABS)	Red/Black	White/Yellow(PVC)	Clear(PE)
2	Mode	Ferrule	Housing	Boot	Cap		
	MM	Zirconia(Ø2.5mm)	Metal	Red/Black	Clear(PE)		
3	Category		Jacket O.D.	Jacket Material		Color	
	OM1(50/125um)		Ø2mm	PVC OFNR		Orange	

## GT-STSTDM10-xM

ST/ST Duplex Multimode OM2 50/125 Cable Orange- xM



The GigaTech Products **GT-STSTDM10-xM** fiber optic patch cords are ideal for short distance patching applications. These fiber optic cables have been built to exceed industry standards and are tested for insertion loss and reflectance on all connectors. They are constructed using Corning glass within UL certified OFNR (Riser) rated jacket with Kevlar yarn, and are factory terminated resulting in uncompromised performance.

### Performance:

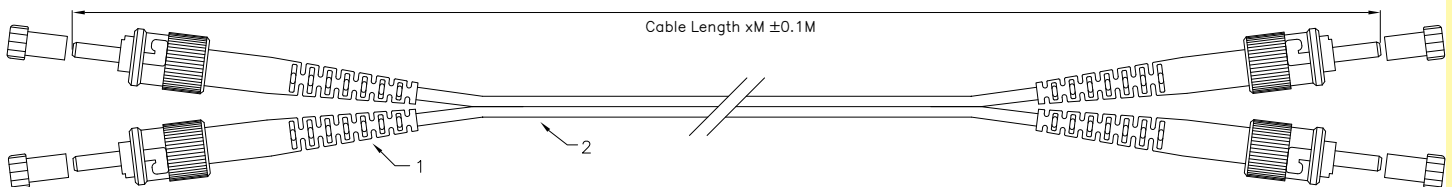
Insertion Loss (max.): 0.3dB  
 Storage Temperature: -40°C +80°C  
 Operation Temperature: -20°C +70°C  
 Mating Durability: <0.2dB  
 Attenuation dB/km max.: 1.0

### Fiber:

Core Diameter: 50µm  
 Cladding Diameter: 125µm  
 Inner Strength Material: Kevlar  
 Connector Type (1): ST  
 Connector Style(1): Duplex  
 Connector Type (2): ST  
 Connector Style (2): Duplex

### Jacket:

Jacket Size: 2mm  
 Jacket Style: Duplex Zipcord PVC  
 Jacket Color: Orange  
 Fire Rating: OFNR (Riser)



1	Mode	Ferrule	Housing	Boot	Cap
	MM	Zirconia(Ø2.5mm)	Metal	Red/Black	Clear(PE)

2	Category	Jacket O.D.	Jacket Material	Color
	OM1(50/125um)	Ø2mm	PVC OFNR	Orange

# Singlemode OS2 Duplex

## SM OS2 9/125 DUPLEX FIBER CABLES

### Performance:

Insertion Loss (max.): 0.3dB  
 Return Loss: >55dB  
 Storage Temperature: -40°C +80°C  
 Operation Temperature: -20°C +70°C  
 Mating Durability: <0.2dB  
 Attenuation dB/km max.: 1.0

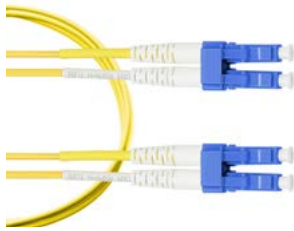
### Fiber:

Core Diameter: 9µm  
 Cladding Diameter: 125µm  
 Inner Strength Material: Kevlar

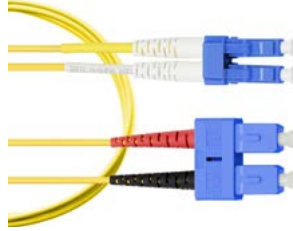
### Jacket:

Jacket Size: 2mm  
 Jacket Style: Duplex Zipcord PVC  
 Jacket Color: Yellow  
 Fire Rating: OFNR (Riser)

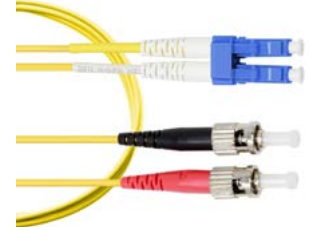
**Standard Stock Lengths:** 1M – 10M, 15M, 20M, 25M, 30M



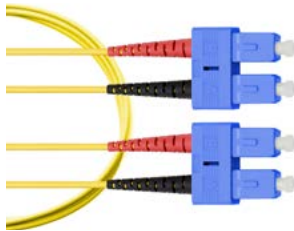
**GT-LCLCDS2Y-xM**  
LC to LC SM OS2



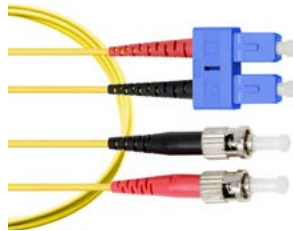
**GT-LCSCDS2Y-xM**  
LC to SC SM OS2



**GT-LCSTDS2Y-xM**  
LC to ST SM OS2



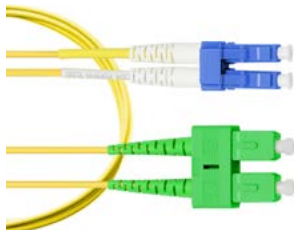
**GT-SCSCDS2Y-xM**  
SC to SC SM OS2



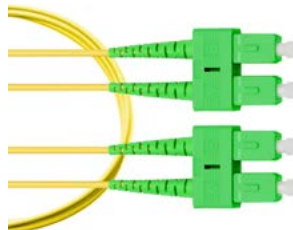
**GT-SCSTDS2Y-xM**  
SC to ST SM OS2



**GT-STSTDS2Y-xM**  
ST to ST SM OS2



**GT-LCSCADS2Y-xM**  
LC to SC-APC SM OS2

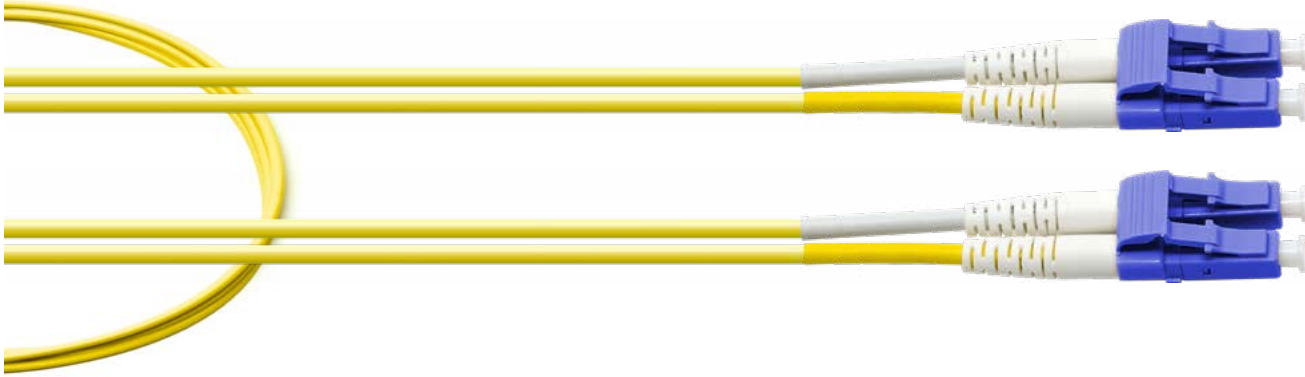


**GT-SCASCADS2Y-xM**  
SC-APC to SC-APC SM OS2

MULTIMODE  
 OM4  
 OM3  
 OM2  
 OM1  
 MM MPO  
 MM MTP  
 SINGLEMODE  
 OS2 MPO  
 OS2 MTP  
 OS2

# GT-LCLCDS2Y-xM

LC/LC Duplex Singlemode OS2 9/125 Cable Yellow- xM



The GigaTech Products **GT-LCLCDS2Y-xM** fiber optic patch cords are ideal for short distance patching applications. These fiber optic cables have been built to exceed industry standards and are tested for insertion loss and reflectance on all connectors. They are constructed using Corning glass within UL certified OFNR (Riser) rated jacket with Kevlar yarn, and are factory terminated resulting in uncompromised performance.

### Performance:

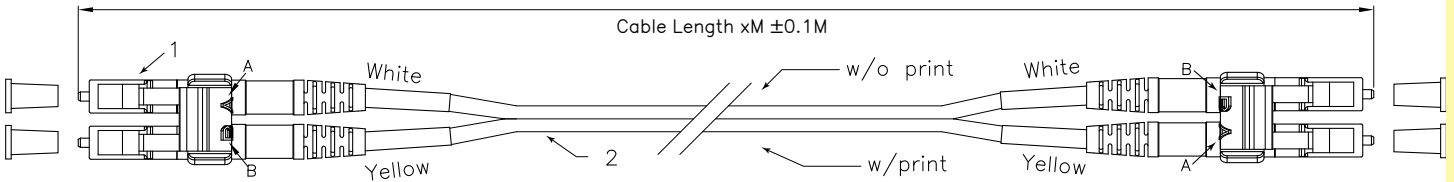
Insertion Loss (max.): 0.3dB  
 Return Loss: >55dB  
 Storage Temperature: -40°C +80°C  
 Operation Temperature: -20°C +70°C  
 Mating Durability: <0.2dB  
 Attenuation dB/km max.: 1.0

### Fiber:

Core Diameter: 9µm  
 Cladding Diameter: 125µm  
 Inner Strength Material: Kevlar  
 Connector Type (1): LC  
 Connector Style(1): Duplex  
 Connector Type (2): LC  
 Connector Style (2): Duplex

### Jacket:

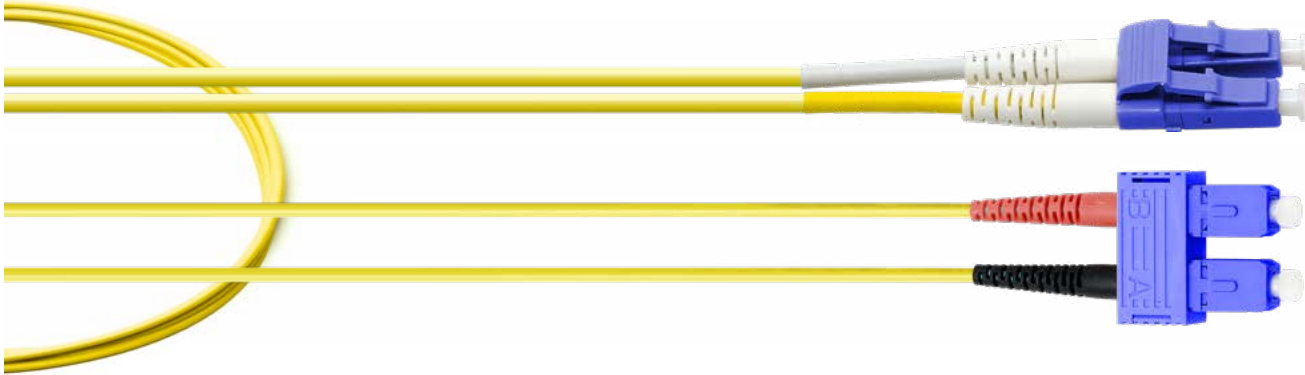
Jacket Size: 2mm  
 Jacket Style: Duplex Zipcord PVC  
 Jacket Color: Yellow  
 Fire Rating: OFNR (Riser)



1	Mode	Ferrule	Housing	Clip	Boot	Tube	Cap
	SM	Zirconia(Ø1.25mm)	Blue(PC)	Blue(PP)	White(TPE)	White/Yellow(PVC)	White(PE)
2	Category		Jacket O.D.	Jacket Material		Color	
	G.65782(9/125um)		Ø2mm	PVC OFNR		Yellow	

# GT-LCSCDS2Y-xM

LC/SC Duplex Singlemode OS2 9/125 Cable Yellow- xM



The GigaTech Products **GT-LCSCDS2Y-xM** fiber optic patch cords are ideal for short distance patching applications. These fiber optic cables have been built to exceed industry standards and are tested for insertion loss and reflectance on all connectors. They are constructed using Corning glass within UL certified OFNR (Riser) rated jacket with Kevlar yarn, and are factory terminated resulting in uncompromised performance.

### Performance:

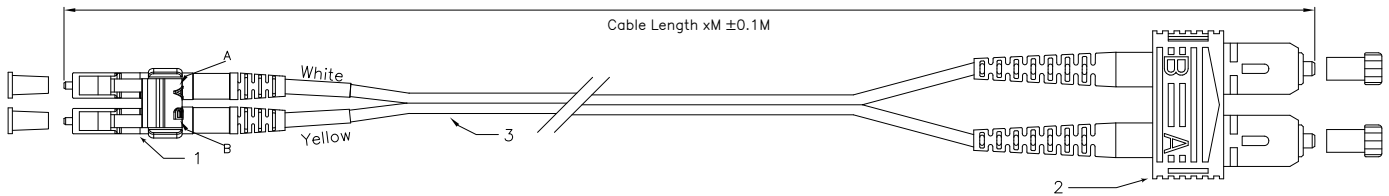
Insertion Loss (max.): 0.3dB  
 Return Loss: >55dB  
 Storage Temperature: -40°C +80°C  
 Operation Temperature: -20°C +70°C  
 Mating Durability: <0.2dB  
 Attenuation dB/km max.: 1.0

### Fiber:

Core Diameter: 9µm  
 Cladding Diameter: 125µm  
 Inner Strength Material: Kevlar  
 Connector Type (1): LC  
 Connector Style(1): Duplex  
 Connector Type (2): SC  
 Connector Style (2): Duplex

### Jacket:

Jacket Size: 2mm  
 Jacket Style: Duplex Zipcord PVC  
 Jacket Color: Yellow  
 Fire Rating: OFNR (Riser)



1	Mode	Ferrule	Housing	Clip	Boot	Tube	Cap
	SM	Zirconia(Ø1.25mm)	Blue(PC)	Blue(PP)	White(TPE)	White/Yellow(PVC)	White(PE)

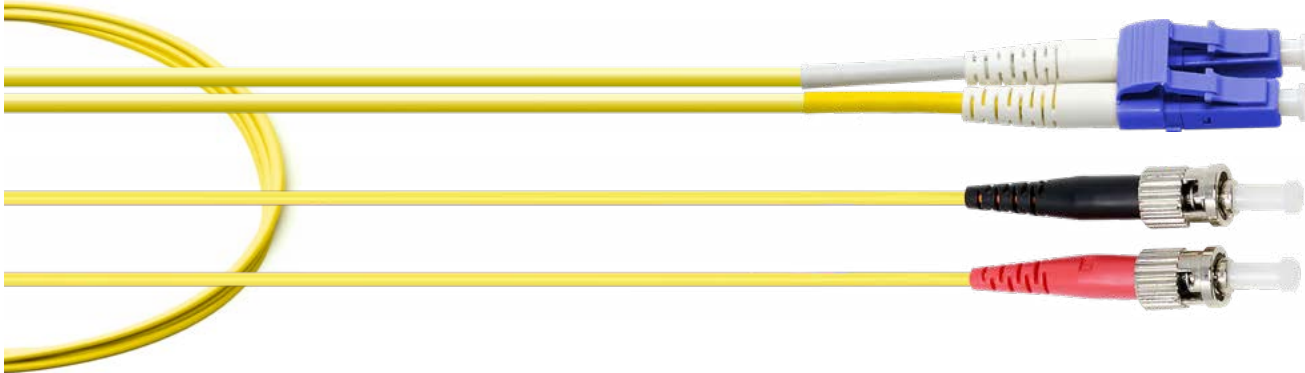
2	Mode	Ferrule	Housing	Clip	Boot	Cap
	SM	Zirconia(Ø2.5mm)	Blue(PBT)	Blue(ABS)	Red/Black	Clear(PE)

3	Category	Jacket O.D.	Jacket Material	Color
	G.65782(9/125um)	Ø2mm	PVC OFNR	Yellow

# GT-LCSTDS2Y-xM

LC/ST Duplex Singlemode OS2 9/125 Cable Yellow- xM



The GigaTech Products **GT-LCSTDS2Y-xM** fiber optic patch cords are ideal for short distance patching applications. These fiber optic cables have been built to exceed industry standards and are tested for insertion loss and reflectance on all connectors. They are constructed using Corning glass within UL certified OFNR (Riser) rated jacket with Kevlar yarn, and are factory terminated resulting in uncompromised performance.

### Performance:

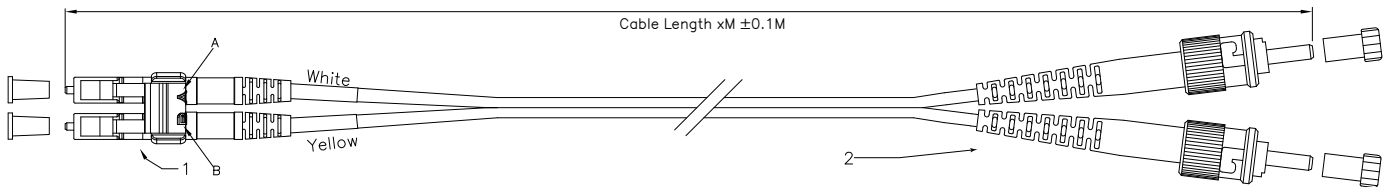
Insertion Loss (max.): 0.3dB  
 Return Loss: >55dB  
 Storage Temperature: -40°C +80°C  
 Operation Temperature: -20°C +70°C  
 Mating Durability: <0.2dB  
 Attenuation dB/km max.: 1.0

### Fiber:

Core Diameter: 9µm  
 Cladding Diameter: 125µm  
 Inner Strength Material: Kevlar  
 Connector Type (1): LC  
 Connector Style(1): Duplex  
 Connector Type (2): ST  
 Connector Style (2): Duplex

### Jacket:

Jacket Size: 2mm  
 Jacket Style: Duplex Zipcord PVC  
 Jacket Color: Yellow  
 Fire Rating: OFNR (Riser)



1	Mode	Ferrule	Housing	Clip	Boot	Tube	Cap
	SM	Zirconia(Ø1.25mm)	Blue(PC)	Blue(PP)	White(TPE)	White/Yellow(PVC)	White(PE)
2	Mode	Ferrule	Housing	Boot	Cap		
	SM	Zirconia(Ø2.5mm)	Metal	Red/Black	Clear(PE)		
3	Category	Jacket O.D.	Jacket Material	Color			
	G.65782(9/125µm)	Ø2mm	PVC OFNR	Yellow			



## GT-SCSCDS2Y-xM

SC/SC Duplex Singlemode OS2 9/125 Cable Yellow- xM



The GigaTech Products **GT-SCSCDS2Y-xM** fiber optic patch cords are ideal for short distance patching applications. These fiber optic cables have been built to exceed industry standards and are tested for insertion loss and reflectance on all connectors. They are constructed using Corning glass within UL certified OFNR (Riser) rated jacket with Kevlar yarn, and are factory terminated resulting in uncompromised performance.

### Performance:

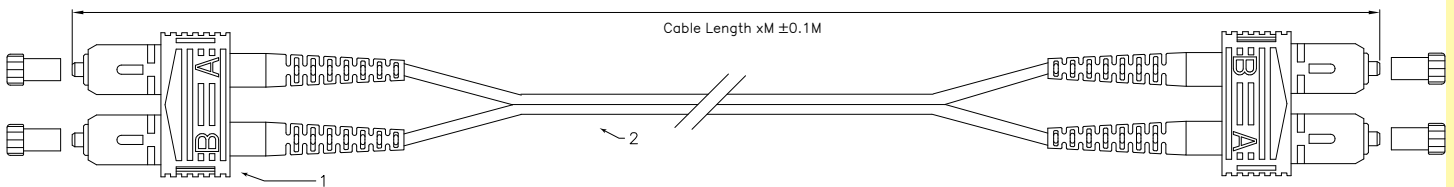
Insertion Loss (max.): 0.3dB  
 Return Loss: >55dB  
 Storage Temperature: -40°C +80°C  
 Operation Temperature: -20°C +70°C  
 Mating Durability: <0.2dB  
 Attenuation dB/km max.: 1.0

### Fiber:

Core Diameter: 9µm  
 Cladding Diameter: 125µm  
 Inner Strength Material: Kevlar  
 Connector Type (1): SC  
 Connector Style(1): Duplex  
 Connector Type (2): SC  
 Connector Style (2): Duplex

### Jacket:

Jacket Size: 2mm  
 Jacket Style: Duplex Zipcord PVC  
 Jacket Color: Yellow  
 Fire Rating: OFNR (Riser)



1	Mode	Ferrule	Housing	Clip	Boot	Cap
	SM	Zirconia(Ø2.5mm)	Blue(PBT)	Blue(ABS)	Red/Black	Clear(PE)

2	Category	Jacket O.D.	Jacket Material	Color
	G.65782(9/125um)	Ø2mm	PVC OFNR	Yellow



# GT-SCSTDS2Y-xM

SC/ST Duplex Singlemode OS2 9/125 Cable Yellow- xM



The GigaTech Products **GT-SCSTDS2Y-xM** fiber optic patch cords are ideal for short distance patching applications. These fiber optic cables have been built to exceed industry standards and are tested for insertion loss and reflectance on all connectors. They are constructed using Corning glass within UL certified OFNR (Riser) rated jacket with Kevlar yarn, and are factory terminated resulting in uncompromised performance.

### Performance:

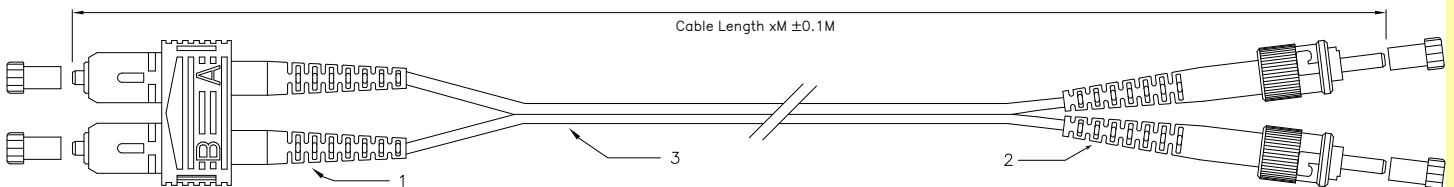
Insertion Loss (max.): 0.3dB  
 Return Loss: >55dB  
 Storage Temperature: -40°C +80°C  
 Operation Temperature: -20°C +70°C  
 Mating Durability: <0.2dB  
 Attenuation dB/km max.: 1.0

### Fiber:

Core Diameter: 9µm  
 Cladding Diameter: 125µm  
 Inner Strength Material: Kevlar  
 Connector Type (1): SC  
 Connector Style(1): Duplex  
 Connector Type (2): ST  
 Connector Style (2): Duplex

### Jacket:

Jacket Size: 2mm  
 Jacket Style: Duplex Zipcord PVC  
 Jacket Color: Yellow  
 Fire Rating: OFNR (Riser)



1	Mode	Ferrule	Housing	Clip	Boot	Cap
	SM	Zirconia(Ø2.5mm)	Blue(PBT)	Blue(ABS)	Red/Black	Clear(PE)

2	Mode	Ferrule	Housing	Boot	Cap
	SM	Zirconia(Ø2.5mm)	Metal	Red/Black	Clear(PE)

3	Category	Jacket O.D.	Jacket Material	Color
	G.65782(9/125um)	Ø2mm	PVC OFNR	Yellow

## GT-STSTDS2Y-xM

ST/ST Duplex Singlemode OS2 9/125 Cable Yellow- xM



The GigaTech Products **GT-STSTDS2Y-xM** fiber optic patch cords are ideal for short distance patching applications. These fiber optic cables have been built to exceed industry standards and are tested for insertion loss and reflectance on all connectors. They are constructed using Corning glass within UL certified OFNR (Riser) rated jacket with Kevlar yarn, and are factory terminated resulting in uncompromised performance.

### Performance:

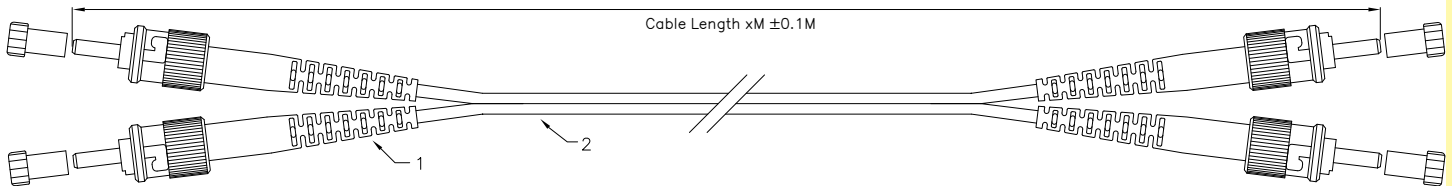
Insertion Loss (max.): 0.3dB  
 Return Loss: >55dB  
 Storage Temperature: -40°C +80°C  
 Operation Temperature: -20°C +70°C  
 Mating Durability: <0.2dB  
 Attenuation dB/km max.: 1.0

### Fiber:

Core Diameter: 9µm  
 Cladding Diameter: 125µm  
 Inner Strength Material: Kevlar  
 Connector Type (1): ST  
 Connector Style(1): Duplex  
 Connector Type (2): ST  
 Connector Style (2): Duplex

### Jacket:

Jacket Size: 2mm  
 Jacket Style: Duplex Zipcord PVC  
 Jacket Color: Yellow  
 Fire Rating: OFNR (Riser)

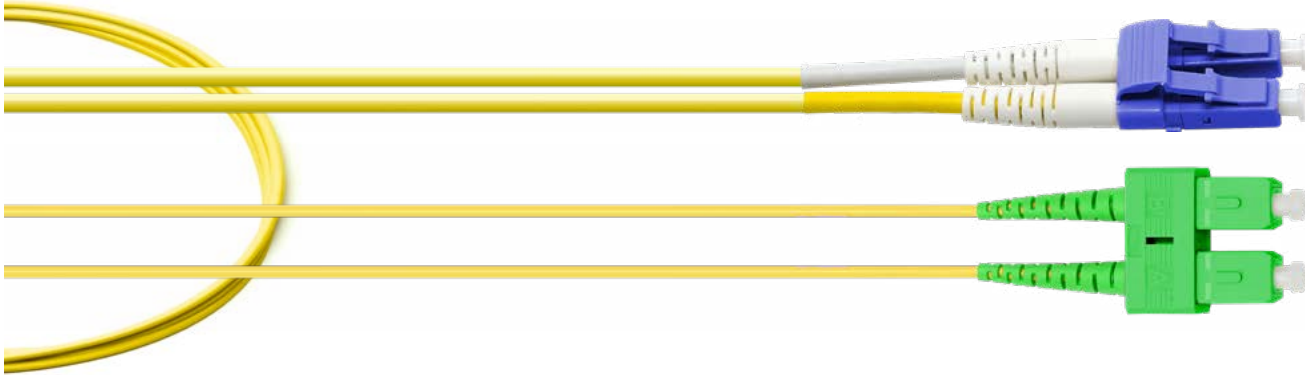


1	Mode	Ferrule	Housing	Boot	Cap
	SM	Zirconia(Ø2.5mm)	Metal	Red/Black	Clear(PE)

2	Category	Jacket O.D.	Jacket Material	Color
	G.65782(9/125µm)	Ø2mm	PVC OFNR	Yellow

# GT-LCSCADS2Y-xM

LC/SC-APC Duplex Singlemode OS2 9/125 Cable Yellow- xM



The GigaTech Products **GT-LCSCADS2Y-xM** fiber optic patch cords are ideal for short distance patching applications. These fiber optic cables have been built to exceed industry standards and are tested for insertion loss and reflectance on all connectors. They are constructed using Corning glass within UL certified OFNR (Riser) rated jacket with Kevlar yarn, and are factory terminated resulting in uncompromised performance.

### Performance:

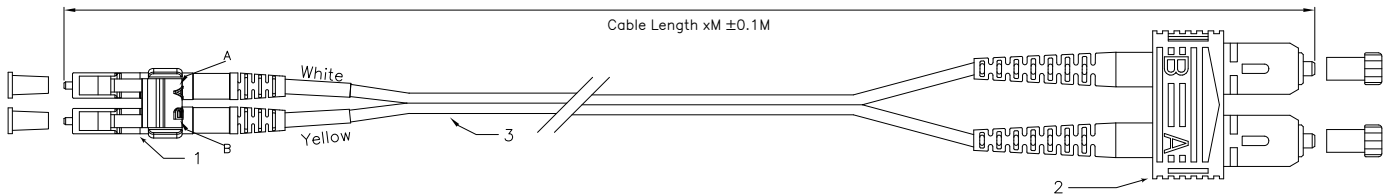
- Insertion Loss (max.): 0.3dB
- Return Loss: >60dB
- Storage Temperature: -40°C +80°C
- Operation Temperature: -20°C +70°C
- Mating Durability: <0.2dB
- Attenuation dB/km max.: 1.0

### Fiber:

- Core Diameter: 9µm
- Cladding Diameter: 125µm
- Inner Strength Material: Kevlar
- Connector Type (1): LC
- Connector Style(1): Duplex
- Connector Type (2): SC-APC
- Connector Style (2): Duplex

### Jacket:

- Jacket Size: 2mm
- Jacket Style: Duplex Zipcord PVC
- Jacket Color: Yellow
- Fire Rating: OFNR (Riser)



1	Mode	Ferrule	Housing	Clip	Boot	Tube	Cap
	SM	Zirconia(Ø1.25mm)	Blue(PC)	Blue(PP)	White(TPE)	White/Yellow(PVC)	White(PE)
2	Mode	Ferrule	Housing	Clip	Boot	Cap	
	SM-APC	Zirconia(Ø2.5mm)	Green(PBT)	Green(ABS)	Green(TPE)	Clear(PE)	
3	Category	Jacket O.D.	Jacket Material	Color			
	G.65782(9/125um)	Ø2mm	PVC OFNR	Yellow			

## GT-SCASCADS2Y-xM

SC-APC/SC-APC Duplex Singlemode OS2 9/125 Cable Yellow- xM



The GigaTech Products **GT-SCASCADS2Y-xM** fiber optic patch cords are ideal for short distance patching applications. These fiber optic cables have been built to exceed industry standards and are tested for insertion loss and reflectance on all connectors. They are constructed using Corning glass within UL certified OFNR (Riser) rated jacket with Kevlar yarn, and are factory terminated resulting in uncompromised performance.

### Performance:

Insertion Loss (max.): 0.3dB

Return Loss: >60dB

Storage Temperature: -40°C +80°C

Operation Temperature: -20°C +70°C

Mating Durability: <0.2dB

Attenuation dB/km max.: 1.0

### Fiber:

Core Diameter: 9µm

Cladding Diameter: 125µm

Inner Strength Material: Kevlar

Connector Type (1): SC-APC

Connector Style(1): Duplex

Connector Type (2): SC-APC

Connector Style (2): Duplex

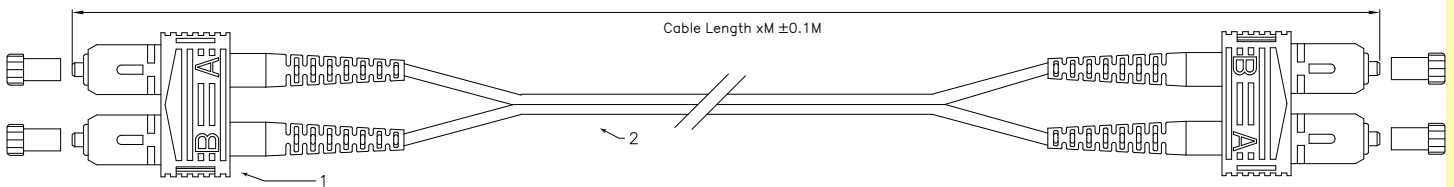
### Jacket:

Jacket Size: 2mm

Jacket Style: Duplex Zipcord PVC

Jacket Color: Yellow

Fire Rating: OFNR (Riser)



1	Mode	Ferrule	Housing	Clip	Boot	Cap
	SM-APC	Zirconia(∅2.5mm)	Green(PBT)	Green(ABS)	Green(TPE)	Clear(PE)

2	Category	Jacket O.D.	Jacket Material	Color
	G.65782(9/125um)	∅2mm	PVC OFNR	Yellow

# Multimode OM4 MTP

## MM OM4 50/125 MTP FIBER CABLES

### Performance:

Insertion Loss (max.): 0.3dB  
 Storage Temperature: -40°C +80°C  
 Operation Temperature: -20°C +70°C  
 Mating Durability: <0.2dB  
 Attenuation dB/km max.: 1.0

### Fiber:

Core Diameter: 50µm  
 Cladding Diameter: 125µm  
 Inner Strength Material: Kevlar

### Jacket:

Jacket Size: 3mm  
 Jacket Style: Multifiber PVC  
 Jacket Color: Aqua  
 Fire Rating: OFNP (Plenum)

### Practical Distance Applications

100Mb	1Gbe	10Gbe	40Gbe	100Gbe	400Gbe	800Gbe
2000m	1100m	400m	150m	150m	100m	100m

**Standard Stock Lengths:** 1M – 10M, 15M, 20M, 25M, 30M



**GT-MPFF12yM4A-xM**  
MTP to MTP 12F MM



**GT-MPFF24yM4A-xM**  
MTP to MTP 24F MM



**GT-MP4LCDM4A2-xM**  
MTP to 4x LC MM

OM4  
 OM3  
 OM2  
 MULTIMODE  
 OM1  
 MM MPO  
 MM MTP  
 OS2 MPO  
 SINGLEMODE  
 OS2 MTP  
 OS2

# GT-MPFF12yM4A-xM

MTP-F/MTP-F 12-Fiber Method-y Multimode OM4 50/125, OFNP Plenum, Aqua- xM



The GigaTech Products **GT-MPFF12yM4A-xM** fiber optic patch cord is ideal for short distance patching applications. These fiber optic cables have been built to exceed industry standards and are tested for insertion loss and reflectance on all connectors. They are constructed using Corning glass within UL certified OFNP (Plenum) rated jacket with Kevlar yarn, and are factory terminated resulting in uncompromised performance.

### Performance:

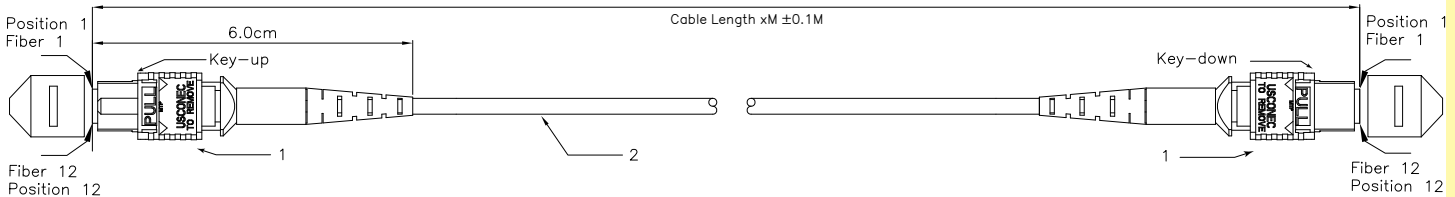
Insertion Loss (max.): <0.35dB  
 Optical Return Loss: >20dB  
 Storage Temperature: -40°C +80°C  
 Operation Temperature: -20°C +70°C  
 Attenuation dB/km max.: 1.0

### Fiber:

Core Diameter: 50µm  
 Cladding Diameter: 125µm  
 Inner Strength Material: Kevlar  
 Connector Type (1): MTP  
 Connector Style(1): Single  
 Connector Type (2): MTP  
 Connector Style (2): Single

### Jacket:

Jacket Size: 3mm  
 Jacket Style: Multifiber PVC  
 Jacket Color: Aqua  
 Fire Rating: OFNP (Plenum)



1	Mode	Ferrule	Housing	Clip	Boot	Cap
	MM	12 Fiber MM Low Loss	Aqua(PBT)	Ivory(PP)	Black(TPR)	Black(TPR)

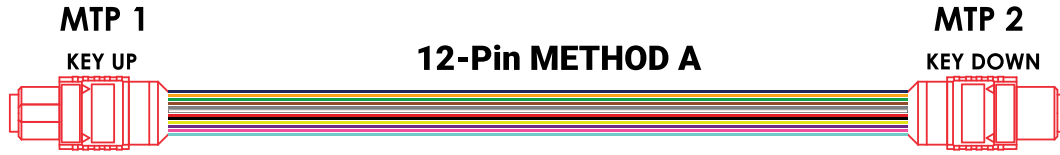
2	Category	Jacket O.D.	Jacket Material	Color
	OM4(50/125um)	ø3.00mm	PVC OFNP	Aqua



# GT-MPFF12yM4A-xM

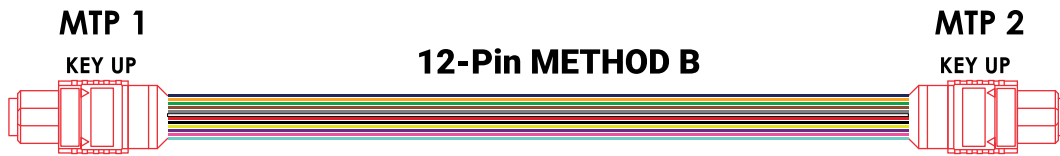
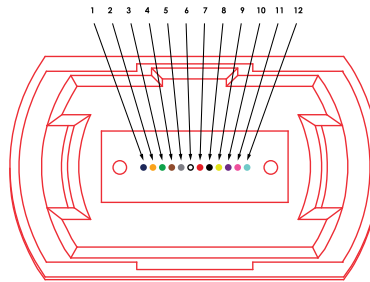
MTP-F/MTP-F 12-Fiber Method-y Multimode OM4 50/125, OFNP Plenum, Aqua- xM

## Cable Polarity Options



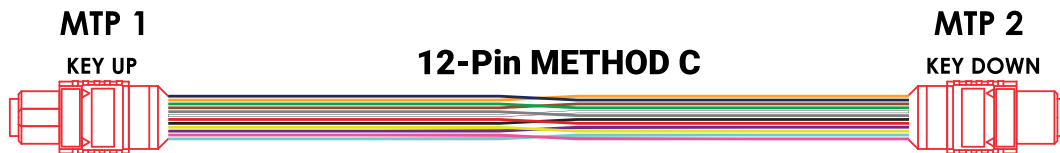
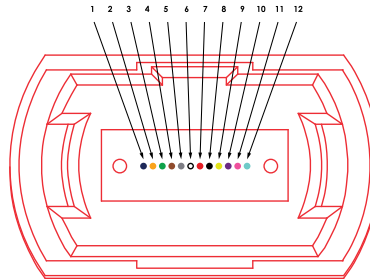
PIN OUT			
METHOD "A" KEY UP - KEY DOWN (STRAIGHT THROUGH)			
MTP 1		MTP 2	
FIBER COLOR CONNECTOR A	MTP PIN OUT POSITION KEY UP	FIBER COLOR CONNECTOR B	MTP PIN OUT POSITION KEY DOWN
BLUE	1	BLUE	1
ORANGE	2	ORANGE	2
GREEN	3	GREEN	3
BROWN	4	BROWN	4
GREY	5	GREY	5
WHITE	6	WHITE	6
RED	7	RED	7
BLACK	8	BLACK	8
YELLOW	9	YELLOW	9
PURPLE	10	PURPLE	10
PINK	11	PINK	11
AQUA	12	AQUA	12

MTP-12 Connector Fiber Assignments



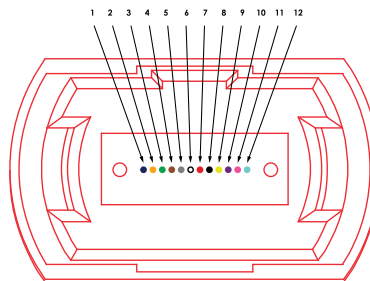
PIN OUT			
METHOD "B" KEY UP - KEY UP (CROSSOVER)			
MTP 1		MTP 2	
FIBER COLOR CONNECTOR A	MTP PIN OUT POSITION KEY UP	FIBER COLOR CONNECTOR B	MTP PIN OUT POSITION KEY UP
BLUE	1	BLUE	12
ORANGE	2	ORANGE	11
GREEN	3	GREEN	10
BROWN	4	BROWN	9
GREY	5	GREY	8
WHITE	6	WHITE	7
RED	7	RED	6
BLACK	8	BLACK	5
YELLOW	9	YELLOW	4
PURPLE	10	PURPLE	3
PINK	11	PINK	2
AQUA	12	AQUA	1

MTP-12 Connector Fiber Assignments



PIN OUT			
METHOD "C" KEY UP - KEY DOWN (CROSS PAIR)			
MTP 1		MTP 2	
FIBER COLOR CONNECTOR A	MTP PIN OUT POSITION KEY UP	FIBER COLOR CONNECTOR B	MTP PIN OUT POSITION KEY DOWN
BLUE	1	BLUE	2
ORANGE	2	ORANGE	1
GREEN	3	GREEN	4
BROWN	4	BROWN	3
GREY	5	GREY	6
WHITE	6	WHITE	5
RED	7	RED	8
BLACK	8	BLACK	7
YELLOW	9	YELLOW	10
PURPLE	10	PURPLE	9
PINK	11	PINK	12
AQUA	12	AQUA	11

MTP-12 Connector Fiber Assignments



# GT-MPFF24yM4A-xM

MTP-F/MTP-F 24-Fiber Method-y Multimode OM4 50/125, OFNP Plenum, Aqua- xM



The GigaTech Products **GT-MPFF24yM4A-xM** fiber optic patch cord is ideal for short distance patching applications. These fiber optic cables have been built to exceed industry standards and are tested for insertion loss and reflectance on all connectors. They are constructed using Corning glass within UL certified OFNP (Plenum) rated jacket with Kevlar yarn, and are factory terminated resulting in uncompromised performance.

### Performance:

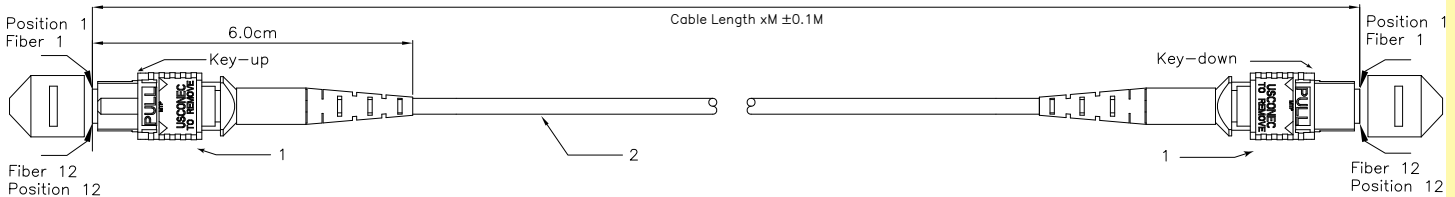
Insertion Loss (max.): <0.35dB  
 Optical Return Loss: >20dB  
 Storage Temperature: -40°C +80°C  
 Operation Temperature: -20°C +70°C  
 Attenuation dB/km max.: 1.0

### Fiber:

Core Diameter: 50µm  
 Cladding Diameter: 125µm  
 Inner Strength Material: Kevlar  
 Connector Type (1): MTP  
 Connector Style(1): Single  
 Connector Type (2): MTP  
 Connector Style (2): Single

### Jacket:

Jacket Size: 3.5mm  
 Jacket Style: Multifiber PVC  
 Jacket Color: Aqua  
 Fire Rating: OFNP (Plenum)



1	Mode	Ferrule	Housing	Clip	Boot	Cap
	MM	24 Fiber MM Low Loss	Aqua(PBT)	Ivory(PP)	Black(TPR)	Black(TPR)

2	Category	Jacket O.D.	Jacket Material	Color
	OM4(50/125um)	ø3.50mm	PVC OFNP	Aqua

# GT-MPFF24yM4A-xM

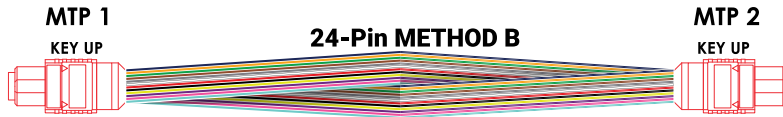
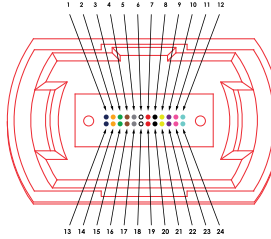
MTP-F/MTP-F 24-Fiber Method-y Multimode OM4 50/125, OFNP Plenum, Aqua- xM

## Cable Polarity Options



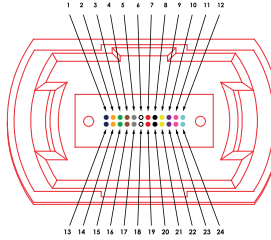
PIN OUT			
MTP 1		MTP 2	
FIBER COLOR	MTP PIN POSITION (KEY UP)	FIBER COLOR	MTP PIN POSITION (KEY DOWN)
BLUE	1	BLUE	13
ORANGE	2	ORANGE	14
GREEN	3	GREEN	15
BROWN	4	BROWN	16
GREY	5	GREY	17
WHITE	6	WHITE	18
RED	7	RED	19
BLACK	8	BLACK	20
YELLOW	9	YELLOW	21
PURPLE	10	PURPLE	22
PINK	11	PINK	23
AQUA	12	AQUA	24
ROW 2			
BLUE	13	BLUE	1
ORANGE	14	ORANGE	2
GREEN	15	GREEN	3
BROWN	16	BROWN	4
GREY	17	GREY	5
WHITE	18	WHITE	6
RED	19	RED	7
BLACK	20	BLACK	8
YELLOW	21	YELLOW	9
PURPLE	22	PURPLE	10
PINK	23	PINK	11
AQUA	24	AQUA	12

MTP-24 Connector Fiber Assignments



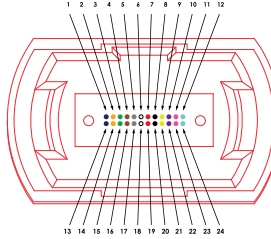
PIN OUT			
MTP 1		MTP 2	
FIBER COLOR	MTP PIN POSITION (KEY UP)	FIBER COLOR	MTP PIN POSITION (KEY UP)
BLUE	1	BLUE	24
ORANGE	2	ORANGE	22
GREEN	3	GREEN	21
BROWN	4	BROWN	20
GREY	5	GREY	19
WHITE	6	WHITE	18
RED	7	RED	17
BLACK	8	BLACK	16
YELLOW	9	YELLOW	15
PURPLE	10	PURPLE	14
PINK	11	PINK	13
AQUA	12	AQUA	12
ROW 2			
BLUE	13	BLUE	11
ORANGE	14	ORANGE	10
GREEN	15	GREEN	9
BROWN	16	BROWN	8
GREY	17	GREY	7
WHITE	18	WHITE	6
RED	19	RED	5
BLACK	20	BLACK	4
YELLOW	21	YELLOW	3
PURPLE	22	PURPLE	2
PINK	23	PINK	1
AQUA	24	AQUA	1

MTP-24 Connector Fiber Assignments



PIN OUT			
MTP 1		MTP 2	
FIBER COLOR	MTP PIN POSITION (KEY UP)	FIBER COLOR	MTP PIN POSITION (KEY DOWN)
BLUE	1	BLUE	14
ORANGE	2	ORANGE	13
GREEN	3	GREEN	16
BROWN	4	BROWN	15
GREY	5	GREY	18
WHITE	6	WHITE	17
RED	7	RED	20
BLACK	8	BLACK	19
YELLOW	9	YELLOW	22
PURPLE	10	PURPLE	21
PINK	11	PINK	24
AQUA	12	AQUA	23
ROW 2			
BLUE	13	BLUE	2
ORANGE	14	ORANGE	1
GREEN	15	GREEN	4
BROWN	16	BROWN	3
GREY	17	GREY	6
WHITE	18	WHITE	5
RED	19	RED	8
BLACK	20	BLACK	7
YELLOW	21	YELLOW	10
PURPLE	22	PURPLE	9
PINK	23	PINK	12
AQUA	24	AQUA	11

MTP-24 Connector Fiber Assignments



# GT-MP4LCDM4A2-xM

MTP-Female to 4xLC Duplex Multimode OM4 50/125, 24 Inch 2.0mm Breakout, Plenum Cable Aqua- xM



The GigaTech Products **GT-MP4LCDM4A2-xM** fiber optic patch cord is ideal for short distance patching applications. These fiber optic cables have been built to exceed industry standards and are tested for insertion loss and reflectance on all connectors. They are constructed using Corning glass within UL certified OFNP (Plenum) rated jacket with Kevlar yarn, and are factory terminated resulting in uncompromised performance.

### Performance:

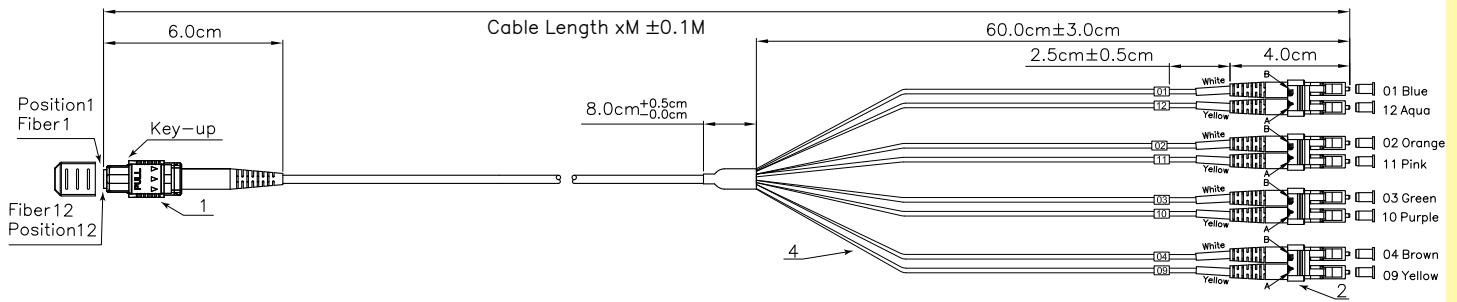
MTP Insertion Loss (max.): <0.35dB  
 MTP Optical Return Loss: >20dB  
 LC Insertion Loss (max.): <0.15dB  
 LC Optical Return Loss: >35dB  
 Storage Temperature: -40°C +80°C  
 Operation Temperature: -20°C +70°C  
 Attenuation dB/km max.: 1.0

### Fiber:

Core Diameter: 50µm  
 Cladding Diameter: 125µm  
 Inner Strength Material: Kevlar  
 Connector Type (1): MTP  
 Connector Style(1): Single  
 Connector Type (2): 4x LC  
 Connector Style (2): Duplex

### Jacket:

Jacket Size: 3mm  
 Jacket Style: Multifiber PVC  
 Jacket Color: Aqua  
 Fire Rating: OFNP (Plenum)



1	Mode	Ferrule	Housing	Clip	Boot	Cap	
	MM	12 Fiber MM Low Loss	Aqua(PBT)	Ivory(PP)	Black(TPR)	Black(TPR)	
2	Mode	Ferrule	Housing	Clip	Boot	Tube	Cap
	MM	Zirconia(Ø1.25mm)	Ivory(PC)	Ivory(PP)	White(TPE)	White/Yellow(PVC)	White(PE)
3	Category	Jacket O.D.	Tubing O.D.	Jacket Material	Color		
	OM4(50/125µm)	Ø3mm	Ø2mm	PVC OFNP	Aqua		

# Multimode OM4 MPO

## MM OM4 50/125 MPO FIBER CABLES

### Performance:

Insertion Loss (max.): 0.3dB  
 Storage Temperature: -40°C +80°C  
 Operation Temperature: -20°C +70°C  
 Mating Durability: <0.2dB  
 Attenuation dB/km max.: 1.0

### Fiber:

Core Diameter: 50µm  
 Cladding Diameter: 125µm  
 Inner Strength Material: Kevlar

### Jacket:

Jacket Size: 3mm  
 Jacket Style: Multifiber PVC  
 Jacket Color: Aqua  
 Fire Rating: OFNP (Plenum)

### Practical Distance Applications

100Mb	1Gbe	10Gbe	40Gbe	100Gbe	400Gbe	800Gbe
2000m	1100m	400m	150m	150m	100m	100m

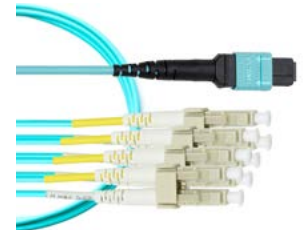
**Standard Stock Lengths:** 1M – 10M, 15M, 20M, 25M, 30M



**GT-MPOFF12yM4A-xM**  
MPO to MPO 12F MM



**GT-MPOFF24yM4A-xM**  
MPO to MPO 24F MM



**GT-MPO4LCDM4A2-xM**  
MPO to 4x LC MM

# GT-MPOFF12yM4A-xM

MPO/MPO 12-Fiber Method-y Multimode OM4 50/125, OFNP Plenum, Aqua- xM



The GigaTech Products **GT-MPOFF12yM4A-xM** fiber optic patch cord is ideal for short distance patching applications. These fiber optic cables have been built to exceed industry standards and are tested for insertion loss and reflectance on all connectors. They are constructed using Corning glass within UL certified OFNP (Plenum) rated jacket with Kevlar yarn, and are factory terminated resulting in uncompromised performance.

### Performance:

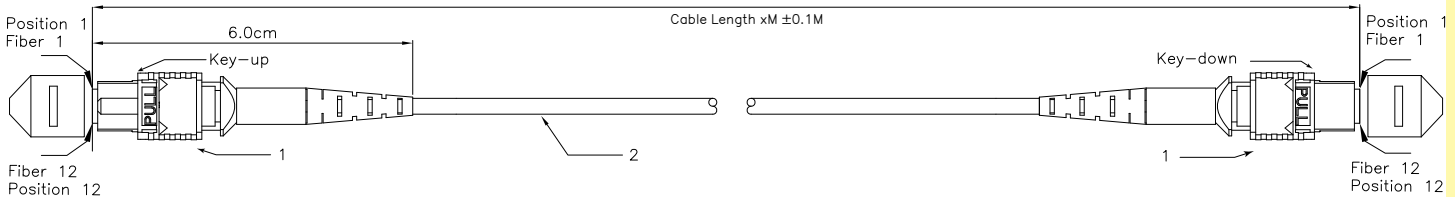
Insertion Loss (max.): <0.35dB  
 Optical Return Loss: >20dB  
 Storage Temperature: -40°C +80°C  
 Operation Temperature: -20°C +70°C  
 Attenuation dB/km max.: 1.0

### Fiber:

Core Diameter: 50µm  
 Cladding Diameter: 125µm  
 Inner Strength Material: Kevlar  
 Connector Type (1): MPO  
 Connector Style(1): Single  
 Connector Type (2): MPO  
 Connector Style (2): Single

### Jacket:

Jacket Size: 3mm  
 Jacket Style: Multifiber PVC  
 Jacket Color: Aqua  
 Fire Rating: OFNP (Plenum)



1	Mode	Ferrule	Housing	Clip	Boot	Cap
	MM	12 Fiber MM Low Loss	Aqua(PBT)	Ivory(PP)	Black(TPR)	Black(TPR)

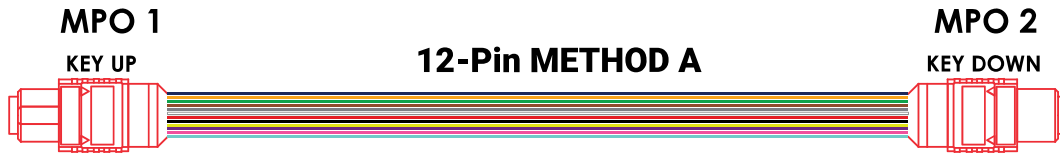
2	Category	Jacket O.D.	Jacket Material	Color
	OM4(50/125um)	ø3.00mm	PVC OFNP	Aqua



# GT-MPOFF12yM4A-xM

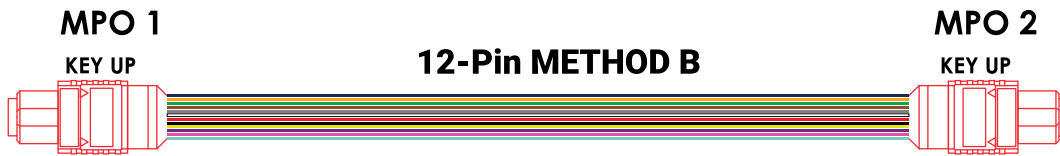
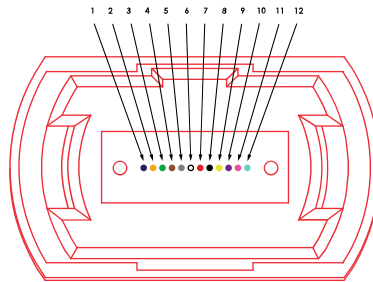
MPO/MPO 12-Fiber Method-y Multimode OM4 50/125, OFNP Plenum, Aqua-xM

## Cable Polarity Options



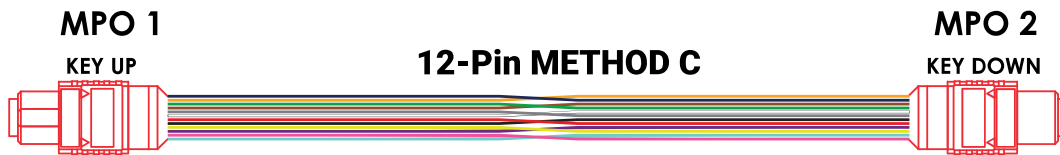
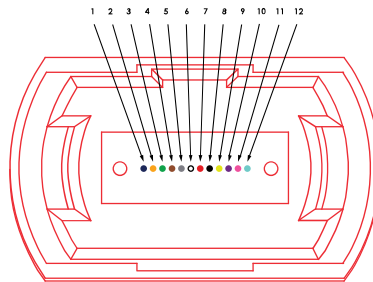
PIN OUT				
METHOD "A" KEY UP - KEY DOWN (STRAIGHT THROUGH)				
MPO 1			MPO 2	
FIBER COLOR CONNECTOR A	MTP PIN OUT POSITION KEY UP		FIBER COLOR CONNECTOR B	MTP PIN OUT POSITION KEY DOWN
BLUE	1	↔	BLUE	1
ORANGE	2	↔	ORANGE	2
GREEN	3	↔	GREEN	3
BROWN	4	↔	BROWN	4
GREY	5	↔	GREY	5
WHITE	6	↔	WHITE	6
RED	7	↔	RED	7
BLACK	8	↔	BLACK	8
YELLOW	9	↔	YELLOW	9
PURPLE	10	↔	PURPLE	10
PINK	11	↔	PINK	11
AQUA	12	↔	AQUA	12

MPO-12 Connector Fiber Assignments



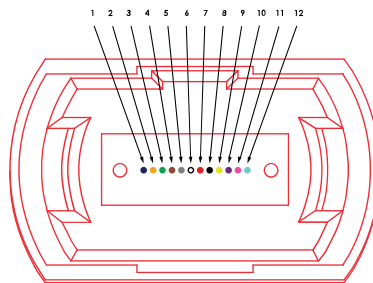
PIN OUT				
METHOD "B" KEY UP - KEY UP (CROSSOVER)				
MPO 1			MPO 2	
FIBER COLOR CONNECTOR A	MTP PIN OUT POSITION KEY UP		FIBER COLOR CONNECTOR B	MTP PIN OUT POSITION KEY UP
BLUE	1	↔	BLUE	12
ORANGE	2	↔	ORANGE	11
GREEN	3	↔	GREEN	10
BROWN	4	↔	BROWN	9
GREY	5	↔	GREY	8
WHITE	6	↔	WHITE	7
RED	7	↔	RED	6
BLACK	8	↔	BLACK	5
YELLOW	9	↔	YELLOW	4
PURPLE	10	↔	PURPLE	3
PINK	11	↔	PINK	2
AQUA	12	↔	AQUA	1

MPO-12 Connector Fiber Assignments



PIN OUT				
METHOD "C" KEY UP - KEY DOWN (CROSS PAIR)				
MPO 1			MPO 2	
FIBER COLOR CONNECTOR A	MTP PIN OUT POSITION KEY UP		FIBER COLOR CONNECTOR B	MTP PIN OUT POSITION KEY DOWN
BLUE	1	↔	BLUE	2
ORANGE	2	↔	ORANGE	1
GREEN	3	↔	GREEN	4
BROWN	4	↔	BROWN	3
GREY	5	↔	GREY	6
WHITE	6	↔	WHITE	5
RED	7	↔	RED	8
BLACK	8	↔	BLACK	7
YELLOW	9	↔	YELLOW	10
PURPLE	10	↔	PURPLE	9
PINK	11	↔	PINK	12
AQUA	12	↔	AQUA	11

MPO-12 Connector Fiber Assignments



# GT-MPOFF24yM4A-xM

MPO-F/MPO-F 24-Fiber Method-y Multimode OM4 50/125, OFNP Plenum, Aqua- xM



The GigaTech Products **GT-MPOFF24yM4A-xM** fiber optic patch cord is ideal for short distance patching applications. These fiber optic cables have been built to exceed industry standards and are tested for insertion loss and reflectance on all connectors. They are constructed using Corning glass within UL certified OFNP (Plenum) rated jacket with Kevlar yarn, and are factory terminated resulting in uncompromised performance.

### Performance:

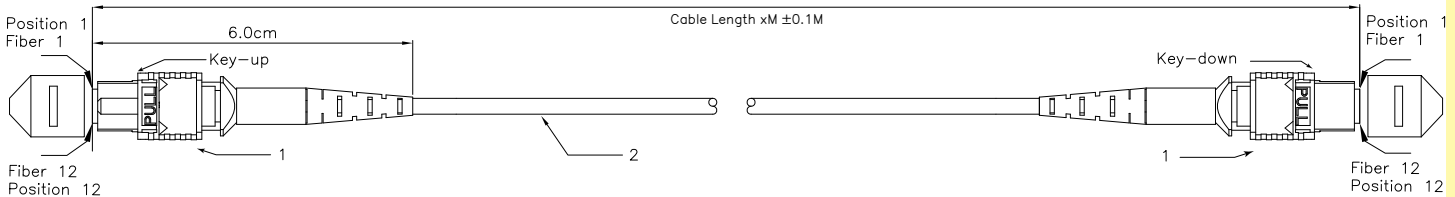
Insertion Loss (max.): <0.35dB  
 Optical Return Loss: >20dB  
 Storage Temperature: -40°C +80°C  
 Operation Temperature: -20°C +70°C  
 Attenuation dB/km max.: 1.0

### Fiber:

Core Diameter: 50µm  
 Cladding Diameter: 125µm  
 Inner Strength Material: Kevlar  
 Connector Type (1): MPO  
 Connector Style(1): Single  
 Connector Type (2): MPO  
 Connector Style (2): Single

### Jacket:

Jacket Size: 3.5mm  
 Jacket Style: Multifiber PVC  
 Jacket Color: Aqua  
 Fire Rating: OFNP (Plenum)



1	Mode	Ferrule	Housing	Clip	Boot	Cap
	MM	24 Fiber MM Low Loss	Aqua(PBT)	Ivory(PP)	Black(TPR)	Black(TPR)

2	Category	Jacket O.D.	Jacket Material	Color
	OM4(50/125um)	ø3.50mm	PVC OFNP	Aqua

# GT-MPOFF24yM4A-xM

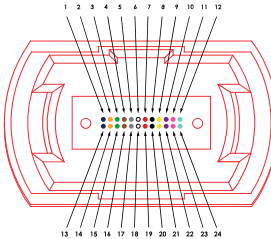
MPO-F/MPO-F 24-Fiber Method-y Multimode OM4 50/125, OFNP Plenum, Aqua- xM

## Cable Polarity Options



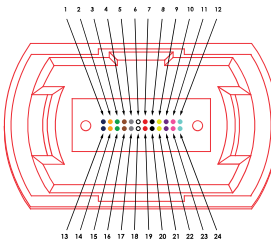
PIN OUT			
MPO 1		MPO 2	
FIBER COLOR	MTP PIN POSITION KEY UP	FIBER COLOR	MTP PIN POSITION KEY DOWN
BLUE	1	BLUE	13
ORANGE	2	ORANGE	14
GREEN	3	GREEN	15
BROWN	4	BROWN	16
GREY	5	GREY	17
WHITE	6	WHITE	18
RED	7	RED	19
BLACK	8	BLACK	20
YELLOW	9	YELLOW	21
PURPLE	10	PURPLE	22
PINK	11	PINK	23
AQUA	12	AQUA	24
ROW 2			
BLUE	13	BLUE	1
ORANGE	14	ORANGE	2
GREEN	15	GREEN	3
BROWN	16	BROWN	4
GREY	17	GREY	5
WHITE	18	WHITE	6
RED	19	RED	7
BLACK	20	BLACK	8
YELLOW	21	YELLOW	9
PURPLE	22	PURPLE	10
PINK	23	PINK	11
AQUA	24	AQUA	12

MPO-24 Connector Fiber Assignments



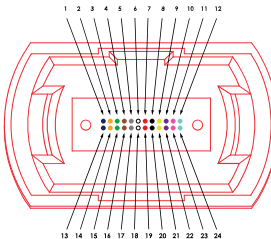
PIN OUT			
MPO 1		MPO 2	
FIBER COLOR	MTP PIN POSITION KEY UP	FIBER COLOR	MTP PIN POSITION KEY UP
BLUE	1	BLUE	24
ORANGE	2	ORANGE	23
GREEN	3	GREEN	22
BROWN	4	BROWN	21
GREY	5	GREY	20
WHITE	6	WHITE	19
RED	7	RED	18
BLACK	8	BLACK	17
YELLOW	9	YELLOW	16
PURPLE	10	PURPLE	15
PINK	11	PINK	14
AQUA	12	AQUA	13
ROW 2			
BLUE	13	BLUE	12
ORANGE	14	ORANGE	11
GREEN	15	GREEN	10
BROWN	16	BROWN	9
GREY	17	GREY	8
WHITE	18	WHITE	7
RED	19	RED	6
BLACK	20	BLACK	5
YELLOW	21	YELLOW	4
PURPLE	22	PURPLE	3
PINK	23	PINK	2
AQUA	24	AQUA	1

MPO-24 Connector Fiber Assignments



PIN OUT			
MPO 1		MPO 2	
FIBER COLOR	MTP PIN POSITION KEY UP	FIBER COLOR	MTP PIN POSITION KEY DOWN
BLUE	1	BLUE	14
ORANGE	2	ORANGE	13
GREEN	3	GREEN	16
BROWN	4	BROWN	15
GREY	5	GREY	18
WHITE	6	WHITE	17
RED	7	RED	20
BLACK	8	BLACK	19
YELLOW	9	YELLOW	22
PURPLE	10	PURPLE	21
PINK	11	PINK	24
AQUA	12	AQUA	23
ROW 2			
BLUE	13	BLUE	2
ORANGE	14	ORANGE	1
GREEN	15	GREEN	4
BROWN	16	BROWN	3
GREY	17	GREY	6
WHITE	18	WHITE	5
RED	19	RED	8
BLACK	20	BLACK	7
YELLOW	21	YELLOW	10
PURPLE	22	PURPLE	9
PINK	23	PINK	12
AQUA	24	AQUA	11

MPO-24 Connector Fiber Assignments



# GT-MPO4LCDM4A2-xM

MPO-Female to 4xLC Duplex Multimode OM4 50/125, 24 Inch 2.0mm Breakout, Plenum Cable Aqua- xM



The GigaTech Products **GT-MPO4LCDM4A2-xM** fiber optic patch cord is ideal for short distance patching applications. These fiber optic cables have been built to exceed industry standards and are tested for insertion loss and reflectance on all connectors. They are constructed using Corning glass within UL certified OFNP (Plenum) rated jacket with Kevlar yarn, and are factory terminated resulting in uncompromised performance.

### Performance:

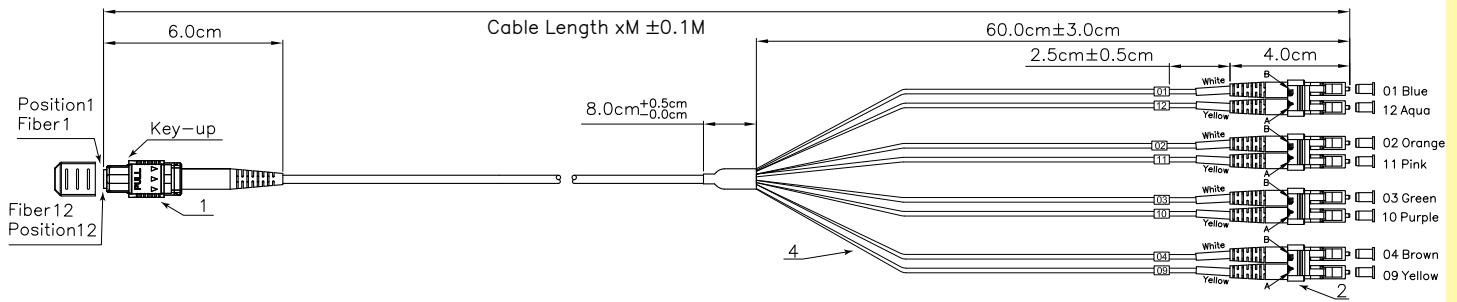
MTP Insertion Loss (max.): <0.35dB  
 MTP Optical Return Loss: >20dB  
 LC Insertion Loss (max.): <0.15dB  
 LC Optical Return Loss: >35dB  
 Storage Temperature: -40°C +80°C  
 Operation Temperature: -20°C +70°C  
 Attenuation dB/km max.: 1.0

### Fiber:

Core Diameter: 50µm  
 Cladding Diameter: 125µm  
 Inner Strength Material: Kevlar  
 Connector Type (1): MPO  
 Connector Style(1): Single  
 Connector Type (2): 4x LC  
 Connector Style (2): Duplex

### Jacket:

Jacket Size: 3mm  
 Jacket Style: Multifiber PVC  
 Jacket Color: Aqua  
 Fire Rating: OFNP (Plenum)



1	Mode	Ferrule	Housing	Clip	Boot	Cap	
	MM	12 Fiber MM Low Loss	Aqua(PBT)	Ivory(PP)	Black(TPR)	Black(TPR)	
2	Mode	Ferrule	Housing	Clip	Boot	Tube	Cap
	MM	Zirconia(Ø1.25mm)	Ivory(PC)	Ivory(PP)	White(TPE)	White/Yellow(PVC)	White(PE)
3	Category	Jacket O.D.	Tubing O.D.	Jacket Material	Color		
	OM4(50/125µm)	Ø3mm	Ø2mm	PVC OFNP	Aqua		

# Singlemode OS2 MTP

SM OS2 50/125 MTP FIBER CABLES

### Performance:

Insertion Loss (max.): 0.3dB  
Storage Temperature: -40°C +80°C  
Operation Temperature: -20°C +70°C  
Mating Durability: <0.2dB  
Attenuation dB/km max.: 1.0

### Fiber:

Core Diameter: 9µm  
Cladding Diameter: 125µm  
Inner Strength Material: Kevlar

### Jacket:

Jacket Size: 3mm  
Jacket Style: Multifiber PVC  
Jacket Color: Yellow  
Fire Rating: OFNP (Plenum)

**Standard Stock Lengths:** 1M – 10M, 15M, 20M, 25M, 30M



**GT-MPAFF12yS2Y-xM**  
MTP-APC to MTP-APC 12F SM



**GT-MPAFF24yS2Y-xM**  
MTP-APC to MTP-APC 24F SM



**GT-MPA4LCDS2Y-xM**  
MTP-APC to 4x LC SM

OM4  
OM3  
OM2  
MULTIMODE  
OM1  
MM MPO  
MM MTP  
OS2 MPO  
SINGLEMODE  
OS2 MTP  
OS2

# GT-MPAFF12yS2Y-xM

MTP-APC Female /MTP-APC Female 12-Fiber Method-y Singlemode OS2 9/125 Plenum Cable Yellow- xM



The GigaTech Products **GT-MPAFF12yS2Y-xM** fiber optic patch cord is ideal for short distance patching applications. These fiber optic cables have been built to exceed industry standards and are tested for insertion loss and reflectance on all connectors. They are constructed using Corning glass within UL certified OFNP (Plenum) rated jacket with Kevlar yarn, and are factory terminated resulting in uncompromised performance.

### Performance:

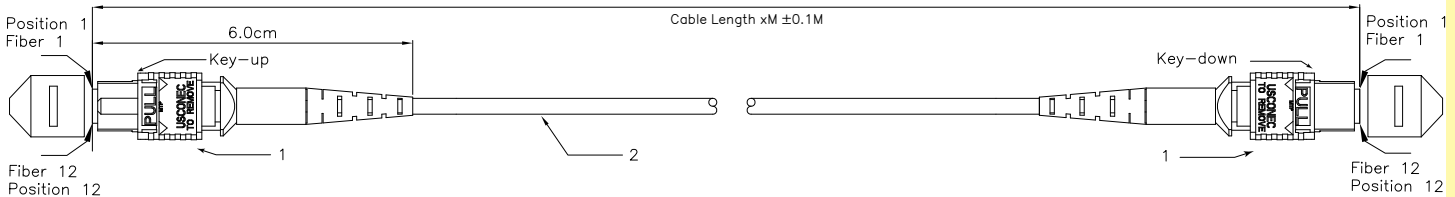
Insertion Loss (max.): <0.60dB  
 Optical Return Loss: >20dB  
 Storage Temperature: -40°C +80°C  
 Operation Temperature: -20°C +70°C  
 Attenuation dB/km max.: 1.0

### Fiber:

Core Diameter: 9µm  
 Cladding Diameter: 125µm  
 Inner Strength Material: Kevlar  
 Connector Type (1): MTP/F APC  
 Connector Style(1): Single  
 Connector Type (2): MTP/F APC  
 Connector Style (2): Single

### Jacket:

Jacket Size: 3mm  
 Jacket Style: Multifiber PVC  
 Jacket Color: Yellow  
 Fire Rating: OFNP (Plenum)



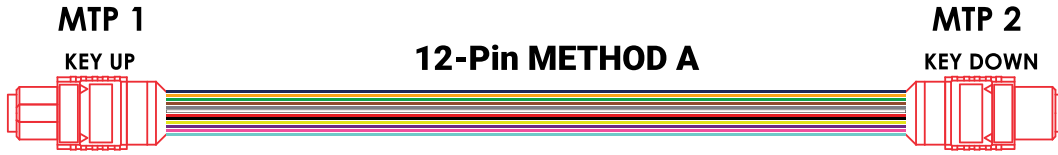
1	Mode	Ferrule	Housing	Boot	Cap
	SM	12 Fiber SM APC Low Loss	Yellow(PBT)	Black(TPR)	Black(TPR)

2	Category	Jacket O.D.	Jacket Material	Color
	G.65781(9/125um)	∅3.00mm	PVC OFNP	Yellow

# GT-MPFF12yM4A-xM

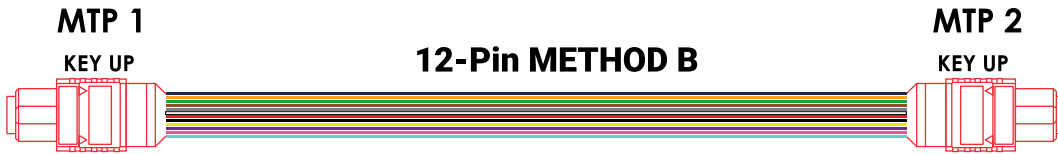
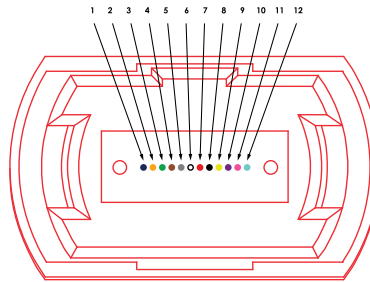
MTP-APC Female /MTP-APC Female 12-Fiber Method-y Singlemode OS2 9/125 Plenum Cable Yellow- xM

## Cable Polarity Options



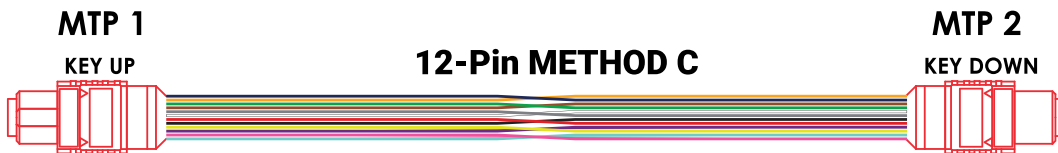
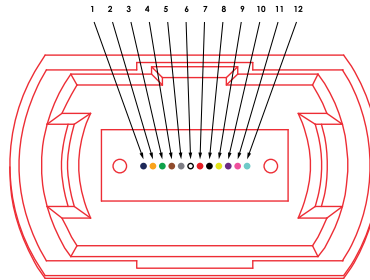
PIN OUT			
METHOD "A" KEY UP - KEY DOWN (STRAIGHT THROUGH)			
MTP 1		MTP 2	
FIBER COLOR CONNECTOR A	MTP PIN OUT POSITION KEY UP	FIBER COLOR CONNECTOR B	MTP PIN OUT POSITION KEY DOWN
BLUE	1	BLUE	1
ORANGE	2	ORANGE	2
GREEN	3	GREEN	3
BROWN	4	BROWN	4
GREY	5	GREY	5
WHITE	6	WHITE	6
RED	7	RED	7
BLACK	8	BLACK	8
YELLOW	9	YELLOW	9
PURPLE	10	PURPLE	10
PINK	11	PINK	11
AQUA	12	AQUA	12

MTP-12 Connector Fiber Assignments



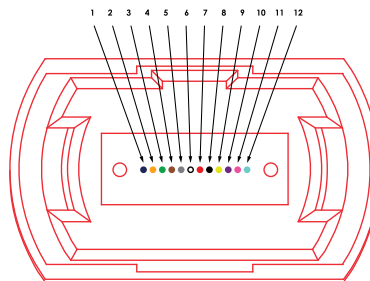
PIN OUT			
METHOD "B" KEY UP - KEY UP (CROSSOVER)			
MTP 1		MTP 2	
FIBER COLOR CONNECTOR A	MTP PIN OUT POSITION KEY UP	FIBER COLOR CONNECTOR B	MTP PIN OUT POSITION KEY UP
BLUE	1	BLUE	12
ORANGE	2	ORANGE	11
GREEN	3	GREEN	10
BROWN	4	BROWN	9
GREY	5	GREY	8
WHITE	6	WHITE	7
RED	7	RED	6
BLACK	8	BLACK	5
YELLOW	9	YELLOW	4
PURPLE	10	PURPLE	3
PINK	11	PINK	2
AQUA	12	AQUA	1

MTP-12 Connector Fiber Assignments



PIN OUT			
METHOD "C" KEY UP - KEY DOWN (CROSS PAIR)			
MTP 1		MTP 2	
FIBER COLOR CONNECTOR A	MTP PIN OUT POSITION KEY UP	FIBER COLOR CONNECTOR B	MTP PIN OUT POSITION KEY DOWN
BLUE	1	BLUE	2
ORANGE	2	ORANGE	1
GREEN	3	GREEN	4
BROWN	4	BROWN	3
GREY	5	GREY	6
WHITE	6	WHITE	5
RED	7	RED	8
BLACK	8	BLACK	7
YELLOW	9	YELLOW	10
PURPLE	10	PURPLE	9
PINK	11	PINK	12
AQUA	12	AQUA	11

MTP-12 Connector Fiber Assignments





# GT-MPAFF24yS2Y-xM

MTP-APC Female /MTP-APC Female 24-Fiber Method-y Singlemode OS2 9/125 Plenum Cable Yellow- xM



The GigaTech Products **GT-MAPFF24yS2Y-xM** fiber optic patch cord is ideal for short distance patching applications. These fiber optic cables have been built to exceed industry standards and are tested for insertion loss and reflectance on all connectors. They are constructed using Corning glass within UL certified OFNP (Plenum) rated jacket with Kevlar yarn, and are factory terminated resulting in uncompromised performance.

### Performance:

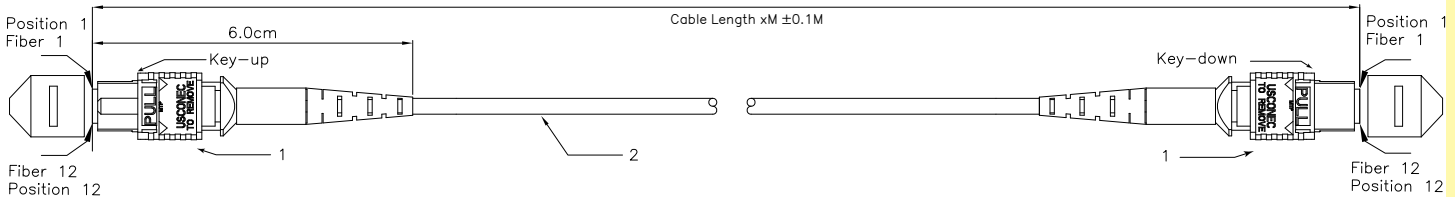
Insertion Loss (max.): <0.60dB  
 Optical Return Loss: >20dB  
 Storage Temperature: -40°C +80°C  
 Operation Temperature: -20°C +70°C  
 Attenuation dB/km max.: 1.0

### Fiber:

Core Diameter: 9µm  
 Cladding Diameter: 125µm  
 Inner Strength Material: Kevlar  
 Connector Type (1): MTP/F APC  
 Connector Style(1): Single  
 Connector Type (2): MTP/F APC  
 Connector Style (2): Single

### Jacket:

Jacket Size: 3.5mm  
 Jacket Style: Multifiber PVC  
 Jacket Color: Yellow  
 Fire Rating: OFNP (Plenum)



1	Mode	Ferrule	Housing	Boot	Cap
	SM	24 Fiber SM APC Low Loss	Yellow(PBT)	Black(TPR)	Black(TPR)

2	Category	Jacket O.D.	Jacket Material	Color
	G.65781(9/125um)	∅3.50mm	PVC OFNP	Yellow

# GT-MPAFF24yS2Y-xM

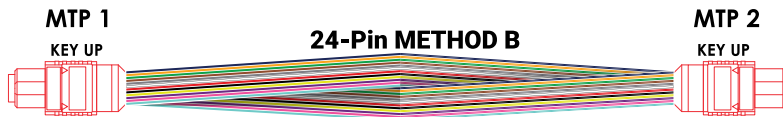
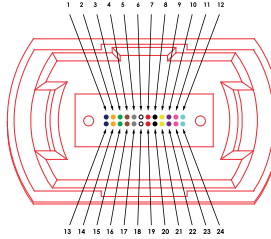
MTP-APC Female /MTP-APC Female 24-Fiber Method-y Singlemode OS2 9/125 Plenum Cable Yellow- xM

## Cable Polarity Options



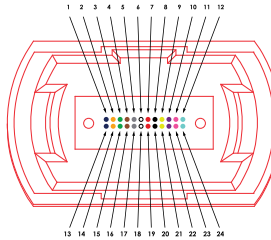
PIN OUT			
MTP 1		MTP 2	
METHOD "A" KEY UP - KEY DOWN (STRAIGHT THROUGH)			
FIBER COLOR CONNECTOR A	MTP PIN POSITION KEY UP	FIBER COLOR CONNECTOR B	MTP PIN POSITION KEY DOWN
BLUE	1	BLUE	13
ORANGE	2	ORANGE	14
GREEN	3	GREEN	15
BROWN	4	BROWN	16
GREY	5	GREY	17
WHITE	6	WHITE	18
RED	7	RED	19
BLACK	8	BLACK	20
YELLOW	9	YELLOW	21
PURPLE	10	PURPLE	22
PINK	11	PINK	23
AQUA	12	AQUA	24
ROW 2			
BLUE	13	BLUE	1
ORANGE	14	ORANGE	2
GREEN	15	GREEN	3
BROWN	16	BROWN	4
GREY	17	GREY	5
WHITE	18	WHITE	6
RED	19	RED	7
BLACK	20	BLACK	8
YELLOW	21	YELLOW	9
PURPLE	22	PURPLE	10
PINK	23	PINK	11
AQUA	24	AQUA	12

MTP-24 Connector Fiber Assignments



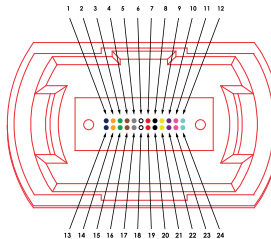
PIN OUT			
MTP 1		MTP 2	
METHOD "B" KEY UP - KEY UP (CROSSOVER)			
FIBER COLOR CONNECTOR A	MTP PIN POSITION KEY UP	FIBER COLOR CONNECTOR B	MTP PIN POSITION KEY UP
BLUE	1	BLUE	24
ORANGE	2	ORANGE	23
GREEN	3	GREEN	22
BROWN	4	BROWN	21
GREY	5	GREY	20
WHITE	6	WHITE	19
RED	7	RED	18
BLACK	8	BLACK	17
YELLOW	9	YELLOW	16
PURPLE	10	PURPLE	15
PINK	11	PINK	14
AQUA	12	AQUA	13
ROW 2			
BLUE	13	BLUE	12
ORANGE	14	ORANGE	11
GREEN	15	GREEN	10
BROWN	16	BROWN	9
GREY	17	GREY	8
WHITE	18	WHITE	7
RED	19	RED	6
BLACK	20	BLACK	5
YELLOW	21	YELLOW	4
PURPLE	22	PURPLE	3
PINK	23	PINK	2
AQUA	24	AQUA	1

MTP-24 Connector Fiber Assignments



PIN OUT			
MTP 1		MTP 2	
METHOD "C" KEY UP - KEY DOWN (CROSS PAIR)			
FIBER COLOR CONNECTOR A	MTP PIN POSITION KEY UP	FIBER COLOR CONNECTOR B	MTP PIN POSITION KEY DOWN
BLUE	1	BLUE	14
ORANGE	2	ORANGE	13
GREEN	3	GREEN	16
BROWN	4	BROWN	15
GREY	5	GREY	18
WHITE	6	WHITE	17
RED	7	RED	20
BLACK	8	BLACK	19
YELLOW	9	YELLOW	22
PURPLE	10	PURPLE	21
PINK	11	PINK	24
AQUA	12	AQUA	23
ROW 2			
BLUE	13	BLUE	2
ORANGE	14	ORANGE	1
GREEN	15	GREEN	4
BROWN	16	BROWN	3
GREY	17	GREY	6
WHITE	18	WHITE	5
RED	19	RED	8
BLACK	20	BLACK	7
YELLOW	21	YELLOW	10
PURPLE	22	PURPLE	9
PINK	23	PINK	12
AQUA	24	AQUA	11

MTP-24 Connector Fiber Assignments



# GT-MPA4LCDS2Y2-xM

MTP-APC Female to 4xLC Duplex Singlemode OS2 9/125, 24 Inch 2.0mm Breakout, Plenum Cable Yellow- xM



The GigaTech Products **GT-MP4LCDM4A2-xM** fiber optic patch cord is ideal for short distance patching applications. These fiber optic cables have been built to exceed industry standards and are tested for insertion loss and reflectance on all connectors. They are constructed using Corning glass within UL certified OFNP (Plenum) rated jacket with Kevlar yarn, and are factory terminated resulting in uncompromised performance.

### Performance:

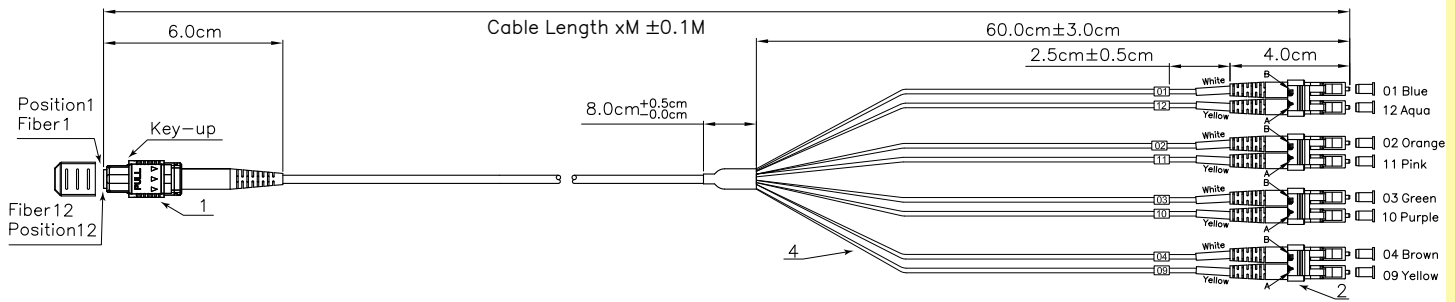
MTP Insertion Loss (max.): <0.35dB  
 MTP Optical Return Loss: >60dB  
 LC Insertion Loss (max.): <0.15dB  
 LC Optical Return Loss: >55dB  
 Storage Temperature: -40°C +80°C  
 Operation Temperature: -20°C +70°C  
 Attenuation dB/km max.: 1.0

### Fiber:

Core Diameter: 9µm  
 Cladding Diameter: 125µm  
 Inner Strength Material: Kevlar  
 Connector Type (1): MTP/F-APC  
 Connector Style(1): Single  
 Connector Type (2): 4x LC-APC  
 Connector Style (2): Duplex

### Jacket:

Jacket Size: 3mm  
 Jacket Style: Multifiber PVC  
 Jacket Color: Yellow  
 Fire Rating: OFNP (Plenum)



1	Mode	Ferrule	Housing	Boot	Cap		
	SM	12 Fiber SM Low Loss	Yellow(PBT)	Black(TPV)	Black(TPV)		
2	Mode	Ferrule	Housing	Clip	Boot	Tube	Cap
	SM	Zirconia(Ø1.25mm)	Blue	Blue	White	White/Yellow(PVC)	White(PE)
3	Category	Jacket O.D.	Tubing O.D.	Jacket Material	Color		
	G.657A1(9/125um)	Ø3mm	Ø2mm	PVC OFNP	Yellow		

# Singlemode OS2 MPO

SM OS2 50/125 MPO FIBER CABLES

### Performance:

Insertion Loss (max.): 0.3dB  
Storage Temperature: -40°C +80°C  
Operation Temperature: -20°C +70°C  
Mating Durability: <0.2dB  
Attenuation dB/km max.: 1.0

### Fiber:

Core Diameter: 9µm  
Cladding Diameter: 125µm  
Inner Strength Material: Kevlar

### Jacket:

Jacket Size: 3mm  
Jacket Style: Multifiber PVC  
Jacket Color: Yellow  
Fire Rating: OFNP (Plenum)

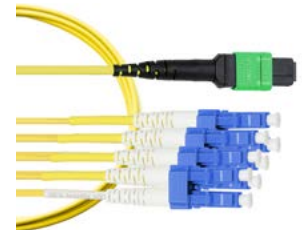
**Standard Stock Lengths:** 1M – 10M, 15M, 20M, 25M, 30M



**GT-MPOAFF12yS2Y-xM**  
MPO-APC to MPO-APC 12F SM



**GT-MPOAFF24yS2Y-xM**  
MPO-APC to MPO-APC 24F SM



**GT-MPOA4LCDS2Y-xM**  
MPO-APC to 4x LC SM

OM4  
OM3  
OM2  
MULTIMODE  
OM1  
MM MPO  
MM MTP  
OS2 MPO  
SINGLEMODE  
OS2 MTP  
OS2

# GT-MPOAFF12yS2Y-xM

MPO-APC Female /MPO-APC Female 12-Fiber Method-y Singlemode OS2 9/125 Plenum Cable Yellow- xM



The GigaTech Products **GT-MPOAFF12yS2Y-xM** fiber optic patch cord is ideal for short distance patching applications. These fiber optic cables have been built to exceed industry standards and are tested for insertion loss and reflectance on all connectors. They are constructed using Corning glass within UL certified OFNP (Plenum) rated jacket with Kevlar yarn, and are factory terminated resulting in uncompromised performance.

### Performance:

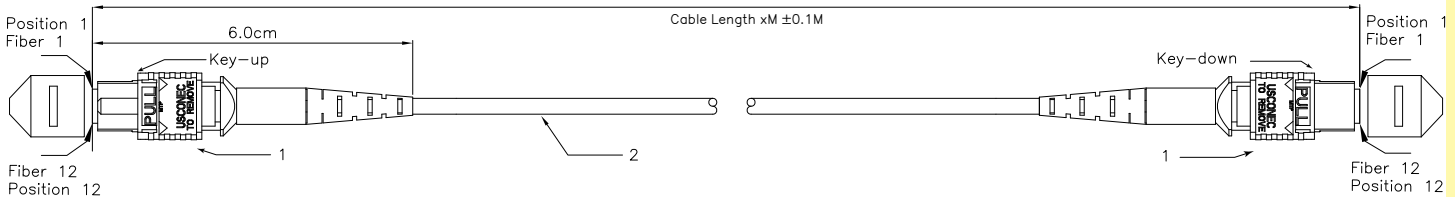
Insertion Loss (max.): <0.60dB  
 Optical Return Loss: >20dB  
 Storage Temperature: -40°C +80°C  
 Operation Temperature: -20°C +70°C  
 Attenuation dB/km max.: 1.0

### Fiber:

Core Diameter: 9µm  
 Cladding Diameter: 125µm  
 Inner Strength Material: Kevlar  
 Connector Type (1): MPO/F APC  
 Connector Style(1): Single  
 Connector Type (2): MPO/F APC  
 Connector Style (2): Single

### Jacket:

Jacket Size: 3mm  
 Jacket Style: Multifiber PVC  
 Jacket Color: Yellow  
 Fire Rating: OFNP (Plenum)



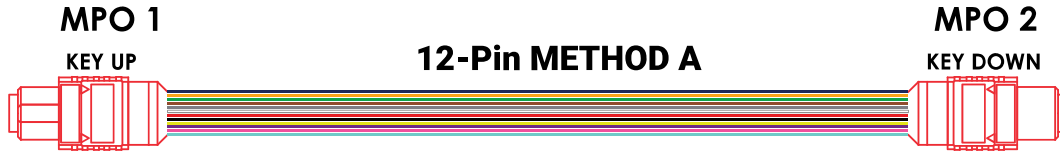
1	Mode	Ferrule	Housing	Boot	Cap
	SM	12 Fiber SM APC Low Loss	Yellow(PBT)	Black(TPR)	Black(TPR)

2	Category	Jacket O.D.	Jacket Material	Color
	OG.65782(9/125um)	∅3.00mm	PVC OFNP	Yellow

# GT-MPOAFF12yS2Y-xM

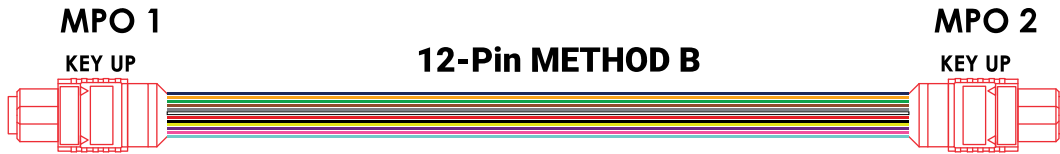
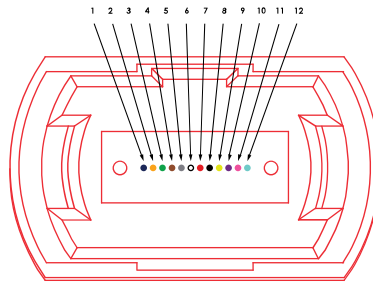
MPO-APC Female /MPO-APC Female 12-Fiber Method-y Singlemode OS2 9/125 Plenum Cable Yellow- xM

## Cable Polarity Options



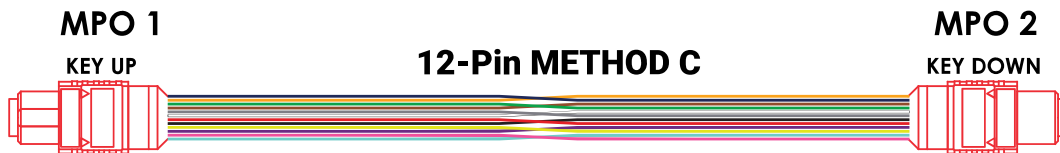
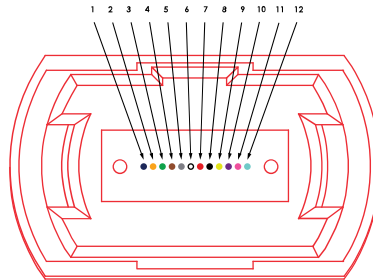
PIN OUT				
METHOD "A" KEY UP - KEY DOWN (STRAIGHT THROUGH)				
MPO 1			MPO 2	
FIBER COLOR CONNECTOR A	MTP PIN OUT POSITION KEY UP		FIBER COLOR CONNECTOR B	MTP PIN OUT POSITION KEY DOWN
BLUE	1	↔	BLUE	1
ORANGE	2	↔	ORANGE	2
GREEN	3	↔	GREEN	3
BROWN	4	↔	BROWN	4
GREY	5	↔	GREY	5
WHITE	6	↔	WHITE	6
RED	7	↔	RED	7
BLACK	8	↔	BLACK	8
YELLOW	9	↔	YELLOW	9
PURPLE	10	↔	PURPLE	10
PINK	11	↔	PINK	11
AQUA	12	↔	AQUA	12

MPO-12 Connector Fiber Assignments



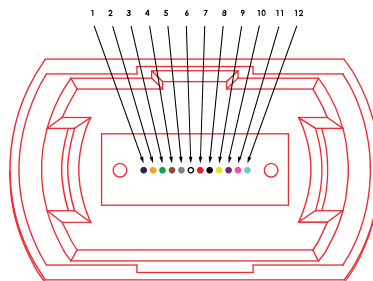
PIN OUT				
METHOD "B" KEY UP - KEY UP (CROSSOVER)				
MPO 1			MPO 2	
FIBER COLOR CONNECTOR A	MTP PIN OUT POSITION KEY UP		FIBER COLOR CONNECTOR B	MTP PIN OUT POSITION KEY UP
BLUE	1	↔	BLUE	12
ORANGE	2	↔	ORANGE	11
GREEN	3	↔	GREEN	10
BROWN	4	↔	BROWN	9
GREY	5	↔	GREY	8
WHITE	6	↔	WHITE	7
RED	7	↔	RED	6
BLACK	8	↔	BLACK	5
YELLOW	9	↔	YELLOW	4
PURPLE	10	↔	PURPLE	3
PINK	11	↔	PINK	2
AQUA	12	↔	AQUA	1

MPO-12 Connector Fiber Assignments



PIN OUT				
METHOD "C" KEY UP - KEY DOWN (CROSS PAIR)				
MPO 1			MPO 2	
FIBER COLOR CONNECTOR A	MTP PIN OUT POSITION KEY UP		FIBER COLOR CONNECTOR B	MTP PIN OUT POSITION KEY DOWN
BLUE	1	↔	BLUE	2
ORANGE	2	↔	ORANGE	1
GREEN	3	↔	GREEN	4
BROWN	4	↔	BROWN	3
GREY	5	↔	GREY	6
WHITE	6	↔	WHITE	5
RED	7	↔	RED	8
BLACK	8	↔	BLACK	7
YELLOW	9	↔	YELLOW	10
PURPLE	10	↔	PURPLE	9
PINK	11	↔	PINK	12
AQUA	12	↔	AQUA	11

MPO-12 Connector Fiber Assignments



# GT-MPOAFF24yS2Y-xM

MPO-APC Female /MPO-APC Female 24-Fiber Method-y Singlemode OS2 9/125 Plenum Cable Yellow- xM



The GigaTech Products **GT-MPOAFF24yS2Y-xM** fiber optic patch cord is ideal for short distance patching applications. These fiber optic cables have been built to exceed industry standards and are tested for insertion loss and reflectance on all connectors. They are constructed using Corning glass within UL certified OFNP (Plenum) rated jacket with Kevlar yarn, and are factory terminated resulting in uncompromised performance.

### Performance:

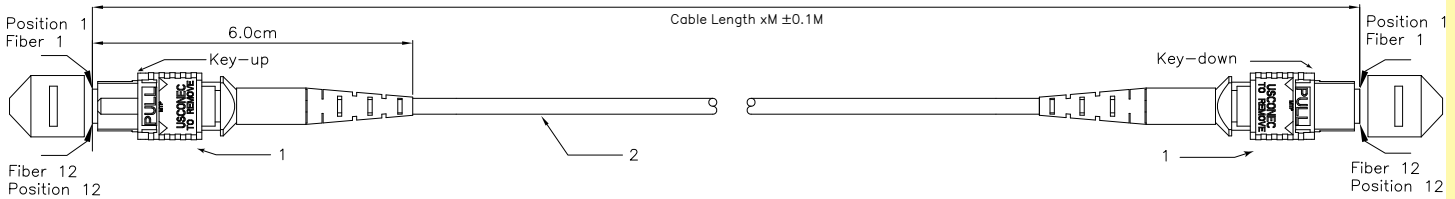
Insertion Loss (max.): <0.60dB  
 Optical Return Loss: >20dB  
 Storage Temperature: -40°C +80°C  
 Operation Temperature: -20°C +70°C  
 Attenuation dB/km max.: 1.0

### Fiber:

Core Diameter: 9µm  
 Cladding Diameter: 125µm  
 Inner Strength Material: Kevlar  
 Connector Type (1): MPO/F APC  
 Connector Style(1): Single  
 Connector Type (2): MPO/F APC  
 Connector Style (2): Single

### Jacket:

Jacket Size: 3.5mm  
 Jacket Style: Multifiber PVC  
 Jacket Color: Yellow  
 Fire Rating: OFNP (Plenum)



1	Mode	Ferrule	Housing	Boot	Cap
	SM	24 Fiber SM APC Low Loss	Yellow(PBT)	Black(TPR)	Black(TPR)

2	Category	Jacket O.D.	Jacket Material	Color
	OG.65782(9/125um)	ø3.50mm	PVC OFNP	Yellow



# GT-MPOAFF24yS2Y-xM

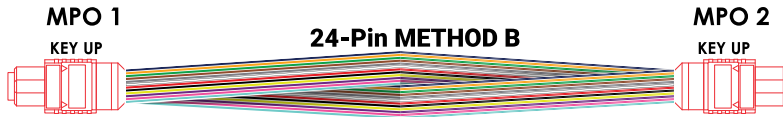
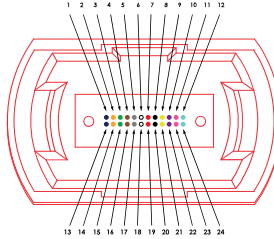
MPO-APC Female /MPO-APC Female 24-Fiber Method-y Singlemode OS2 9/125 Plenum Cable Yellow- xM

## Cable Polarity Options



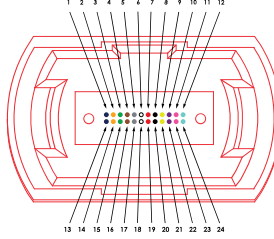
PIN OUT			
METHOD "A" KEY UP - KEY DOWN (STRAIGHT THROUGH)			
MPO 1		MPO 2	
FIBER COLOR	MTP PIN POSITION KEY UP	FIBER COLOR	MTP PIN POSITION KEY DOWN
BLUE	1	BLUE	13
ORANGE	2	ORANGE	14
GREEN	3	GREEN	15
BROWN	4	BROWN	16
GREY	5	GREY	17
WHITE	6	WHITE	18
RED	7	RED	19
BLACK	8	BLACK	20
YELLOW	9	YELLOW	21
PURPLE	10	PURPLE	22
PINK	11	PINK	23
AQUA	12	AQUA	24
ROW 2			
BLUE	13	BLUE	1
ORANGE	14	ORANGE	2
GREEN	15	GREEN	3
BROWN	16	BROWN	4
GREY	17	GREY	5
WHITE	18	WHITE	6
RED	19	RED	7
BLACK	20	BLACK	8
YELLOW	21	YELLOW	9
PURPLE	22	PURPLE	10
PINK	23	PINK	11
AQUA	24	AQUA	12

MPO-24 Connector Fiber Assignments



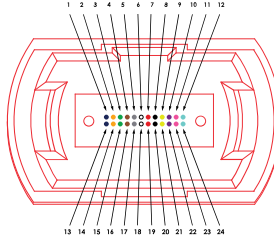
PIN OUT			
METHOD "B" KEY UP - KEY UP (CROSSOVER)			
MPO 1		MPO 2	
FIBER COLOR	MTP PIN POSITION KEY UP	FIBER COLOR	MTP PIN POSITION KEY UP
BLUE	1	BLUE	24
ORANGE	2	ORANGE	23
GREEN	3	GREEN	22
BROWN	4	BROWN	21
GREY	5	GREY	20
WHITE	6	WHITE	19
RED	7	RED	18
BLACK	8	BLACK	17
YELLOW	9	YELLOW	16
PURPLE	10	PURPLE	15
PINK	11	PINK	14
AQUA	12	AQUA	13
ROW 2			
BLUE	13	BLUE	12
ORANGE	14	ORANGE	11
GREEN	15	GREEN	10
BROWN	16	BROWN	9
GREY	17	GREY	8
WHITE	18	WHITE	7
RED	19	RED	6
BLACK	20	BLACK	5
YELLOW	21	YELLOW	4
PURPLE	22	PURPLE	3
PINK	23	PINK	2
AQUA	24	AQUA	1

MPO-24 Connector Fiber Assignments



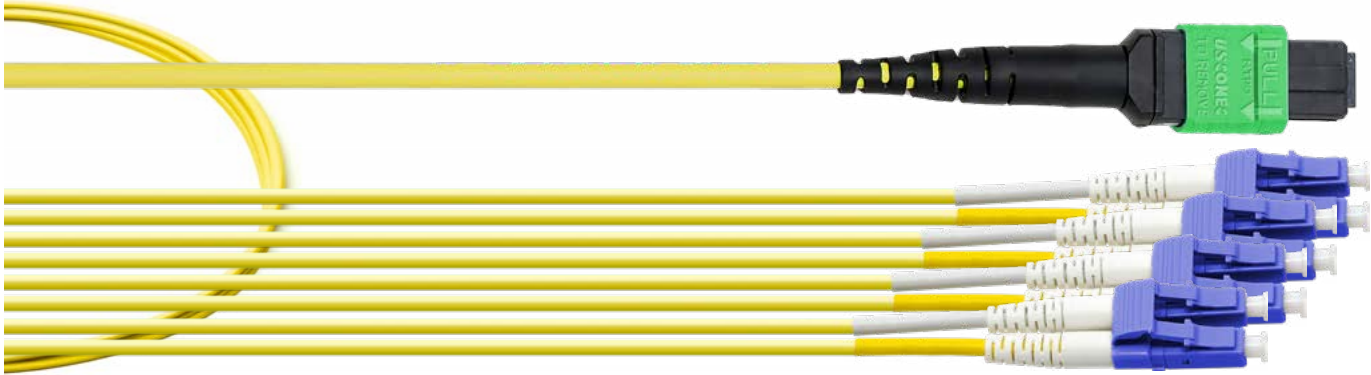
PIN OUT			
METHOD "C" KEY UP - KEY DOWN (CROSS PAIR)			
MPO 1		MPO 2	
FIBER COLOR	MTP PIN POSITION KEY UP	FIBER COLOR	MTP PIN POSITION KEY DOWN
BLUE	1	BLUE	14
ORANGE	2	ORANGE	13
GREEN	3	GREEN	16
BROWN	4	BROWN	15
GREY	5	GREY	18
WHITE	6	WHITE	17
RED	7	RED	20
BLACK	8	BLACK	19
YELLOW	9	YELLOW	22
PURPLE	10	PURPLE	21
PINK	11	PINK	24
AQUA	12	AQUA	23
ROW 2			
BLUE	13	BLUE	2
ORANGE	14	ORANGE	1
GREEN	15	GREEN	4
BROWN	16	BROWN	3
GREY	17	GREY	6
WHITE	18	WHITE	5
RED	19	RED	8
BLACK	20	BLACK	7
YELLOW	21	YELLOW	10
PURPLE	22	PURPLE	9
PINK	23	PINK	12
AQUA	24	AQUA	11

MPO-24 Connector Fiber Assignments



# GT-MPOA4LCDM4A2-xM

MPO-APC Female to 4xLC Duplex Singlemode OS2 9/125, 24 Inch 2.0mm Breakout, Plenum Cable Yellow- xM



The GigaTech Products **GT-MP4LCDM4A2-xM** fiber optic patch cord is ideal for short distance patching applications. These fiber optic cables have been built to exceed industry standards and are tested for insertion loss and reflectance on all connectors. They are constructed using Corning glass within UL certified OFNP (Plenum) rated jacket with Kevlar yarn, and are factory terminated resulting in uncompromised performance.

### Performance:

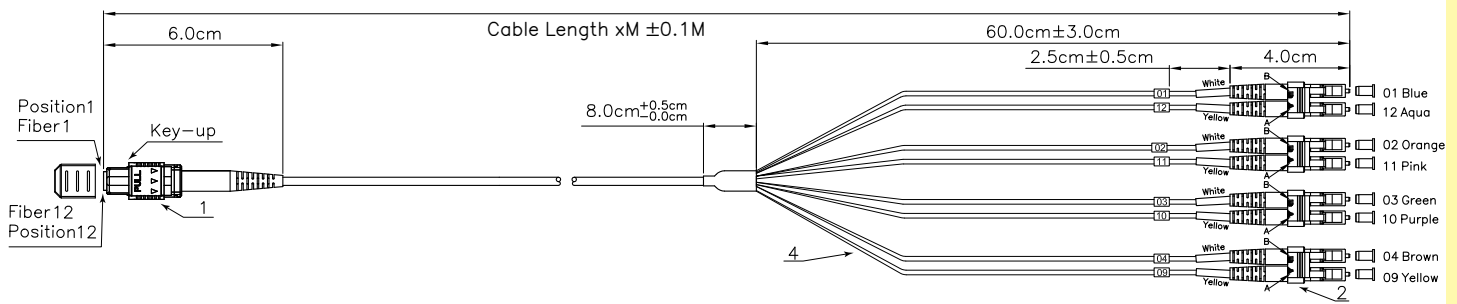
MTP Insertion Loss (max.): <0.35dB  
 MTP Optical Return Loss: >60dB  
 LC Insertion Loss (max.): <0.15dB  
 LC Optical Return Loss: >55dB  
 Storage Temperature: -40°C +80°C  
 Operation Temperature: -20°C +70°C  
 Attenuation dB/km max.: 1.0

### Fiber:

Core Diameter: 9µm  
 Cladding Diameter: 125µm  
 Inner Strength Material: Kevlar  
 Connector Type (1): MPO/F-APC  
 Connector Style(1): Single  
 Connector Type (2): 4x LC-APC  
 Connector Style (2): Duplex

### Jacket:

Jacket Size: 3mm  
 Jacket Style: Multifiber PVC  
 Jacket Color: Yellow  
 Fire Rating: OFNP (Plenum)



1	Mode	Ferrule	Housing	Boot	Cap		
	SM	12 Fiber SM Low Loss	Yellow(PBT)	Black(TPV)	Black(TPV)		
2	Mode	Ferrule	Housing	Clip	Boot	Tube	Cap
	SM	Zirconia(Ø1.25mm)	Blue	Blue	White	White/Yellow(PVC)	White(PE)
3	Category	Jacket O.D.	Tubing O.D.	Jacket Material	Color		
	G.657A1(9/125µm)	Ø3mm	Ø2mm	PVC OFNP	Yellow		